

# Casambi App User Guide

Version 2.12

28.10.2018

© 2018 Casambi Technologies Oy

**CASAMBI**

[www.casambi.com](http://www.casambi.com) · [support@casambi.com](mailto:support@casambi.com)

# Table of contents

Table of contents	1
Introduction	3
Using the Casambi App	4
First time use	4
Taking luminaires into use: Additional info	4
<b>Luminaires</b>	<b>5</b>
Basic Gestures	5
Creating a group	6
Using a group	6
Editing a lamp control	7
<b>Gallery tab</b>	<b>9</b>
First time use	9
Controlling luminaires	10
Arranging the pictures	10
<b>Scenes</b>	<b>11</b>
Circadian scenes	12
Daylight control	13
Creating Animations	14
Time-based scenes	15
<b>More</b>	<b>16</b>
Timers	16
Switches and Xpress	18
Unpairing Xpress	18
Sensors	20
Network setup	21
Control options	22
Sharing settings	24
Add devices	25
Gateway	26
Configure all luminaires	27
Nearby Devices	28
Change Networks	29
Sites	31
App Settings / Resetting a network password	33
Help	33

## Table of contents

### APPENDIX

Smart Switching	35
Push-buttons	39
Control hierarchy	30



Casambi is an advanced lighting control solution based on Bluetooth Low Energy (BLE). Bluetooth Low Energy is the only low power wireless technology in all modern smartphones, tablets and even smart watches, making it the only mainstream and future proof low power radio technology in the world.

Casambi technology can be integrated into luminaires, LED-drivers and even within LED-modules or bulbs, creating an optimal solution in terms of ease of installation and functionality with minimal additional hardware and deployment costs.

Casambi technology provides a mesh network where all the intelligence of the system is replicated in every node. This means that there are no single points of failure.

Casambi app works as one of the user interfaces in a Casambi lighting control solution, the commissioning tool and also as a remote gateway. Casambi app works with iOS and Android devices, like smartphones, tablets and smartwatches. The app is free to download from Google Play and Apple App Store.

## Using the Casambi App

### First time use

Casambi app is easy to use. Follow these simple steps.

1. Download the app from Apple App Store or Google Play Store.
2. Switch on your Casambi enabled luminaires.
3. Open the app.
4. Casambi app will automatically find all Casambi enabled luminaires that are switched on.
5. Select the *Take all luminaires into use*
6. Casambi app will automatically add all of the located luminaires to one network and open the 'Luminaires' tab

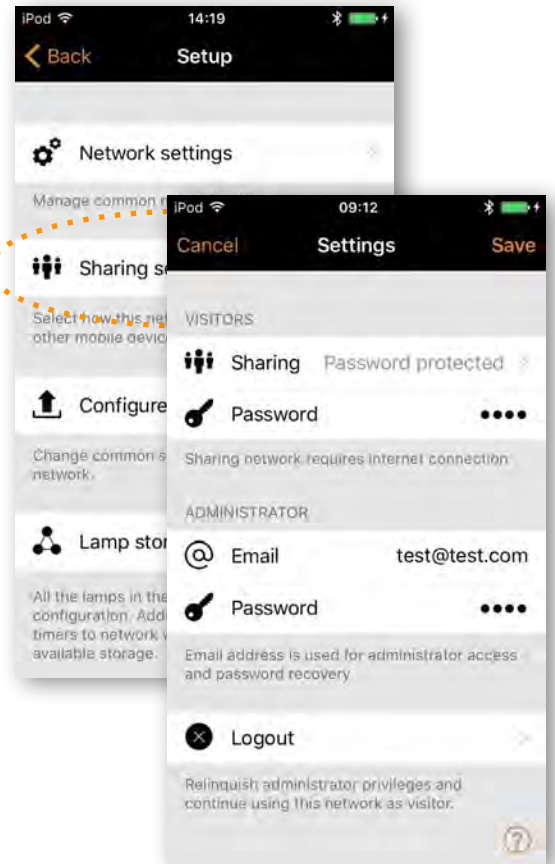
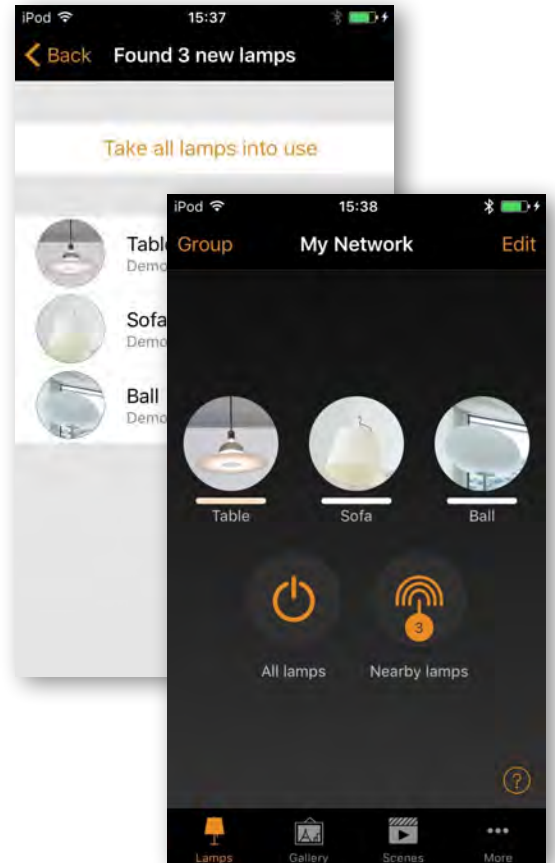
Casambi app has four tabs: Luminaires, Gallery, Scenes and More. All of these will be covered in this document.

### Taking luminaires into use:

#### Additional info

When first taking all luminaires into use the Casambi app will automatically create a network. All the luminaires are added to the same network so that they can be easily controlled from the *Luminaires* tab. One luminaire can only be in one network at a time. When a luminaire is part of a network it is in a 'paired' state and cannot be added to any other network before 'unpairing'. i.e. removing it from the network.

The network that is automatically created is always a *Not shared* network. This means that the network is only stored on the device that has created it and is not shared with other devices. If you would like to share the network you need to change the network sharing. Go to the *More* tab and select *Network setup > Sharing settings*. Select *Sharing settings* to change the sharing mode. There are four different sharing modes: *Not Shared*, *Administrator only*, *Password protected* and *Open*.



# Luminaires

## Basic Gestures

After you have taken your luminaires into use they are displayed in the *Luminaires* tab with a picture, name and the current brightness level.

Here are the basic gestures to control your lights:

To turn off or on your luminaire just tap the luminaire control.

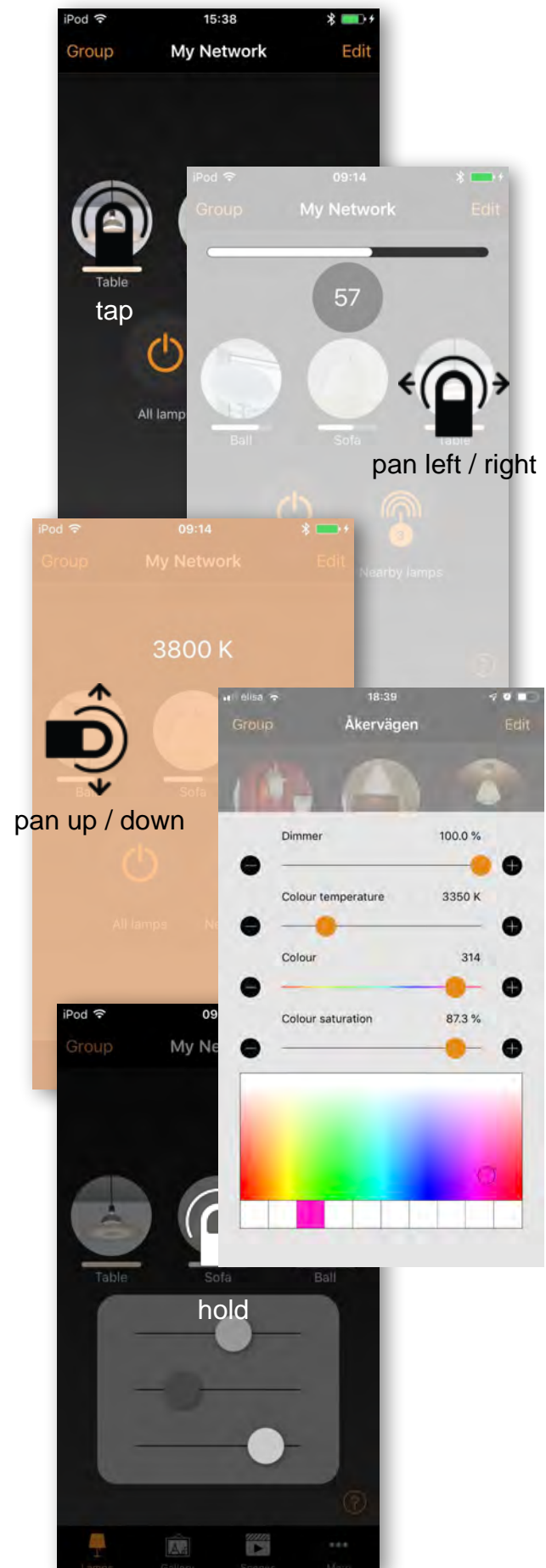
Pan the luminaire control left or right to adjust the light level of the luminaire. The app will remember the last light level, so when you turn on the light on again it will return to the previous level.

Pan the lamp control up or down to adjust the colour temperature of the luminaire.

Select and hold the lamp control to change the colour. It is also possible to save your favourite colours to the palette. Just set the colour and then select and hold an empty palette space to save it. The saved colours are device specific and will not be shared with other devices in the network. Once you have saved different colours to the palette it is not possible to reset it, but previously saved colours can be over-written with new colours.

If you have a lamp that supports more than one channel you can adjust the different channels by holding on top of the lamp control.

*Tip: use the basic gestures on the All luminaires icon to control all of your lamps simultaneously or Nearby luminaires icon to control luminaires that are close to you.*



## Creating a group

On *Luminaires* tab there is the possibility to create a group containing multiple existing luminaires and then control them all simultaneously.

For example, you can make a group out of all living room luminaires and switch them all on or off with one tap.

There are two ways to create a group:

1. Select *Group* at the top of the screen and select the lamps for the group by tapping them. Create the group by tapping the 'folder' icon on top. At the top you can also see + or - icons. They can be used to select or deselect all luminaires. Tap *Done* to save the changes.
2. Select *Edit* at the top of the screen. Drag the lamp controls on top of each other to create a group.

If you want to add more lamps into the group, select *Edit* and drag and drop them on top of the group.

If you want to edit the group just select the group while in edit mode and it will open for editing.

In the edit window you can rename the group and remove lamps from it by dragging and dropping them outside the group area.

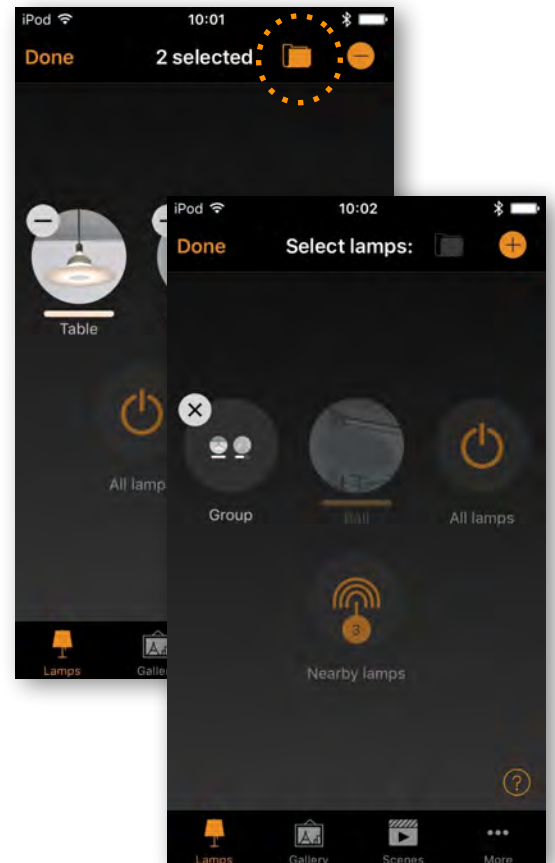
When you have finished editing the group, select *Done* and *Close* to go back to luminaires tab.

If you want to remove a group just select *Edit* or *Group* and then select the X sign in the corner of the group icon.

## Using a group

After creating a group you can control the luminaires in it simultaneously. Use the normal gestures, select, pan and hold to control the whole group.

If you would like to control luminaires separately even if they are part of a group just double tap the group and a screen will open where it is possible to control the luminaires separately.



## Luminaires

### Editing a lamp control

To edit a lamp control either double tap the lamp control you want to edit or tap on the *Edit* on top of the screen and select the lamp control you want to edit.

In the edit screen there are multiple options. You can adjust the luminaire's state, mode, smart-switching features and control hierarchy options etc.

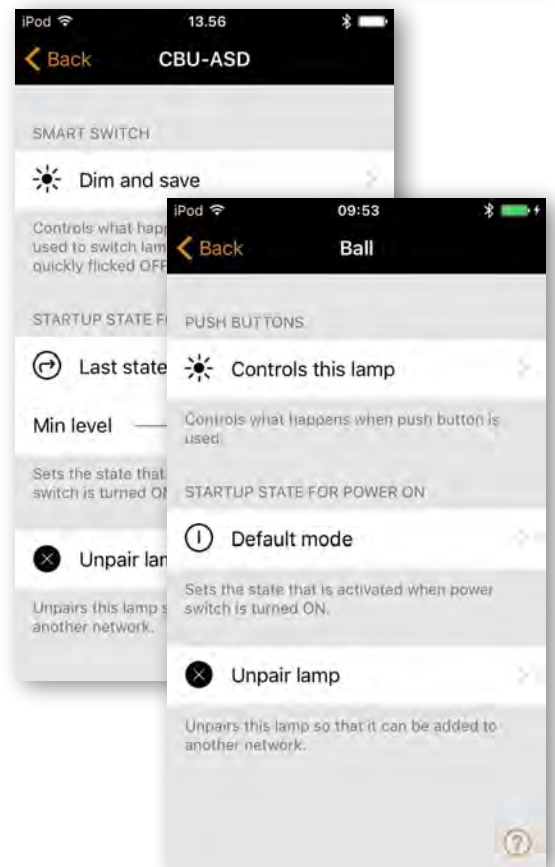
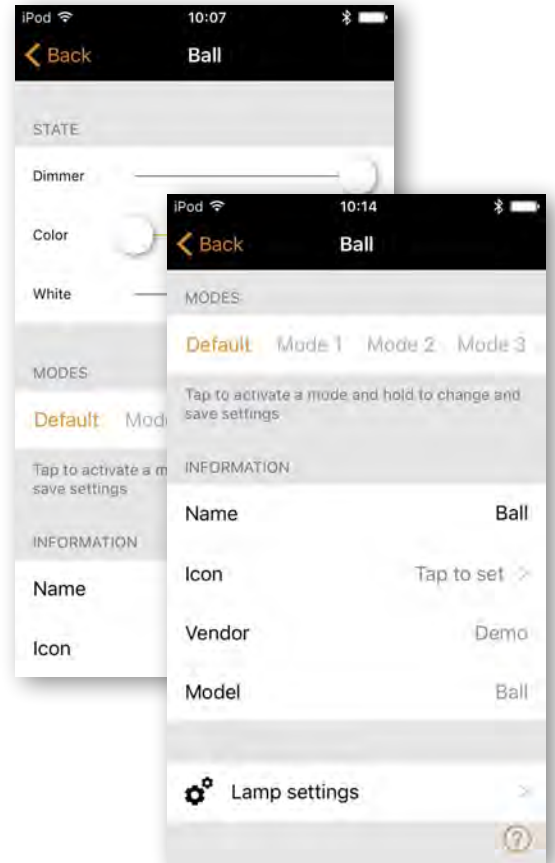
**MODES** Modes can be used to store different dimming levels, colours or colour temperatures. To edit a mode, select and hold the *Default* or *Mode X* text and an *Edit* option will appear. Select *Edit* and then adjust the luminaire's settings as needed. The mode will be automatically saved after adjusting and exiting the luminaire setting. NOTE: the *Default* option is used to set the luminaire state after a power cut.

**SMART SWITCH and PUSH BUTTON** Smart-switching and Push Button allow you to select the mode for a luminaire's switch, depending on the type of Casambi device which you are using. For detailed information about smart-switching and push-buttons, please see the *Smart Switching* and *Push Button* sections of this document.

**DEDICATED DAYLIGHT SENSOR** This option allows you to select a daylight sensor which can affect the luminaire. You can also adjust the *Daylight gain* for this luminaire using the slider.

**STARTUP STATE FOR POWER ON** Allows you to set the luminaire to use either the *Default mode* (default light level) or *Last state* when switching on the luminaire. The *Last state* option will cause a luminaire to go to the same dimming level and colour which were previously in use before the luminaire was switched off.

You can also configure minimum and maximum dimming levels for the luminaire. The luminaire will always operate within these restrictions, although dimming to 0% will always turn off the luminaire.





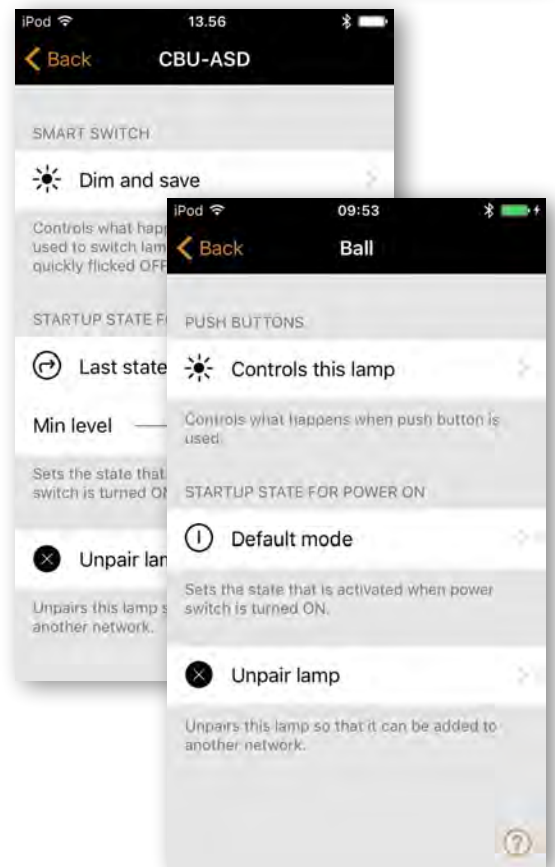
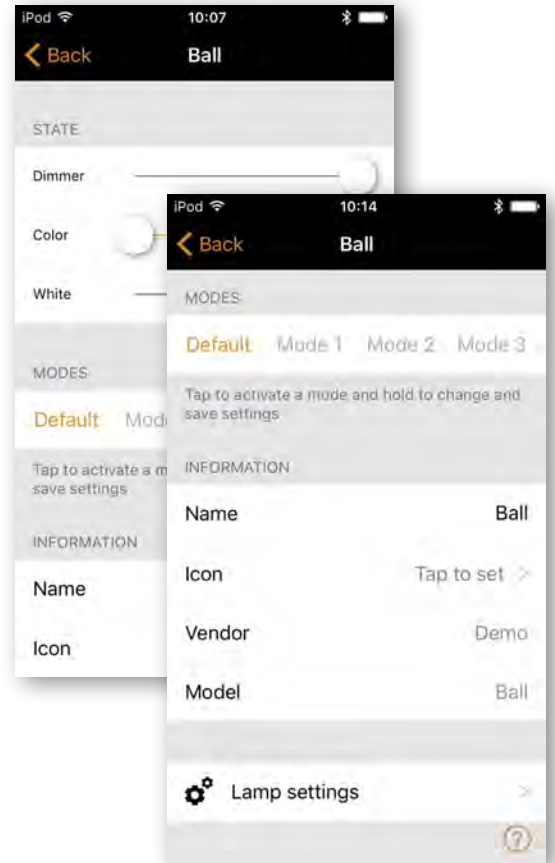
## Luminaires

**MANUAL CONTROL** The *Behaviour* and *Timeout* options allow you to over-ride the network's default manual control settings and create individual options for an individual luminaire. Select *Behaviour* to change how manual control should work for the luminaire and select *Timeout* to over-ride the default timeout value.

**NOTE:** the *Manual Control* option will only appear if *Use control hierarchy* is enabled in the *Control options* section of the network settings.

**INFORMATION** Within this section you can change the luminaire's name and create a new icon which replaces the luminaire's default image. The icon can be a picture from your gallery or you can take a new photo.

**UNPAIR DEVICE / REPLACE DEVICE** Use the *Unpair device* option to remove a luminaire from a network. If a luminaire has become damaged and is powered off, the *Replace device* option can then be used to replace a luminaire. When using the *Replace device* option, an identical luminaire device must be used. This allows all of the previous settings for the luminaire to be used by the new luminaire device.



# Gallery

## First time use

The Gallery in Casambi app is the most intuitive way of controlling your luminaires. Take a picture of the room where your luminaires are and place lamp controls over them in the photograph.

To add the first photograph, select the black and white image and choose whether you want to take a photo or use an existing picture from your device's gallery.

After you have taken a photo or selected a photograph it is added to the Casambi Gallery.

The next step is to add lamp controls to the picture.

Tap on the **+** sign to open the selection screen containing your luminaires

Select a luminaire that is in the photograph and confirm your selection using **Done**. If the required luminaire is in a group, first double tap the group and you can then select the required luminaire.

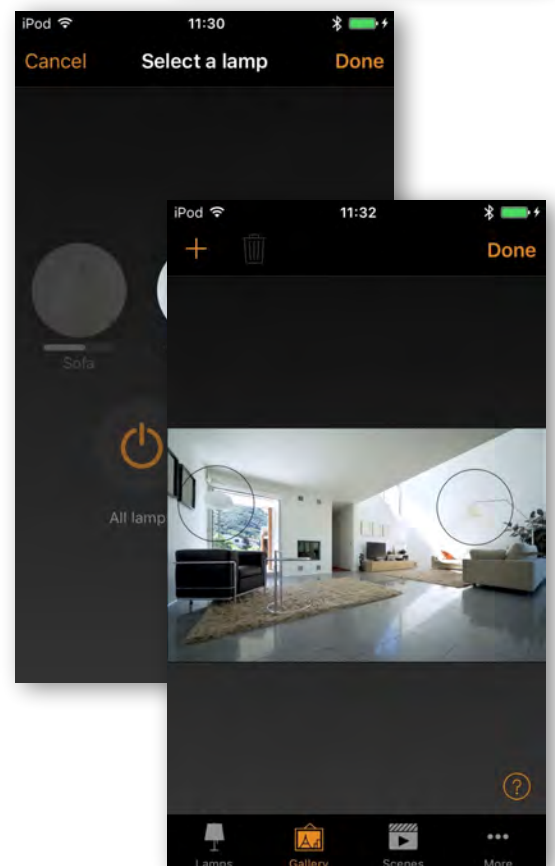
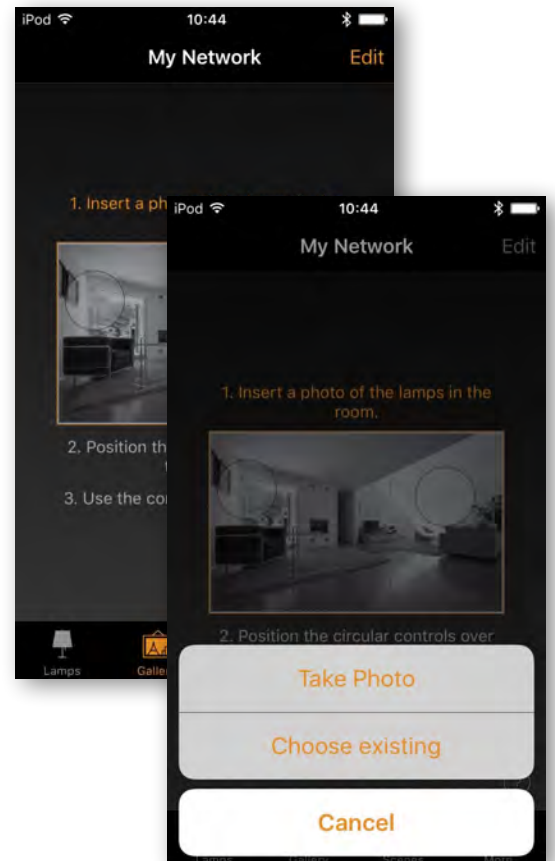
A lamp control circle will appear in the centre of the photograph. Drag the control circle on top of the luminaire. You can resize the circle by pinching.

If you have more than one luminaire in the picture tap on **+** sign to add other controls. When you have added controls over all of the luminaires in the photograph, select **Done**.

To return to the Gallery and add more photographs, select **Close**.

If you would like to add more photographs, select the **+** on top of the Gallery screen. If the **+** sign is not visible, select **Edit** and the **+** sign will appear.

*Tip: take a panorama picture of your room to capture more luminaires in one photo.*



## Gallery

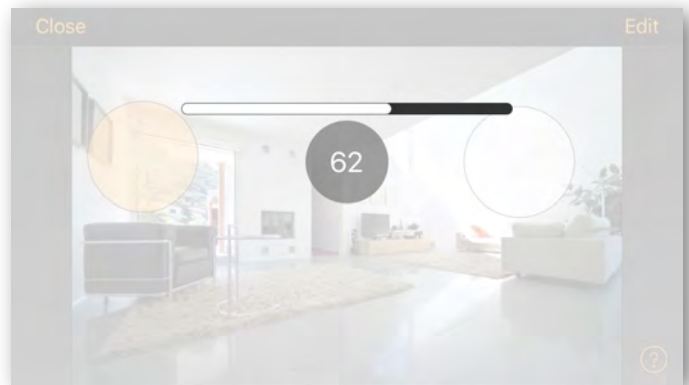
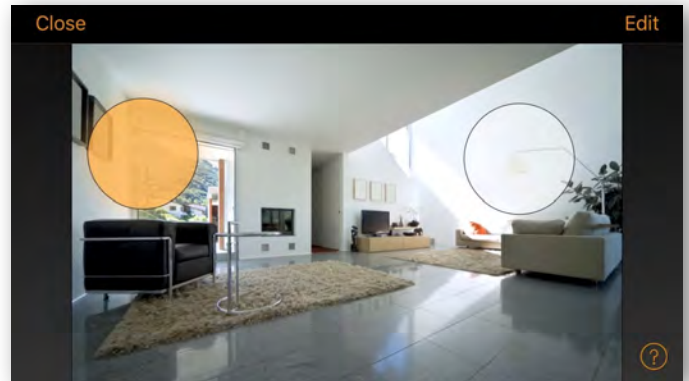
### Controlling luminaires

After adding at least one photo you can open it from Gallery and control the luminaires in it from the photograph. Tap on a photograph to open it in full screen.

Use the normal gestures, select, pan and hold on the lamp control circles to control the luminaires in the picture.

If you open the photograph in portrait orientation then related scenes are shown next to it. The scene icon is shown if even one lamp in the photograph is part of the scene.

*Tip: pan or hold anywhere outside the control circles in the photograph to dim or change colour for all luminaires simultaneously.*



### Arranging the pictures

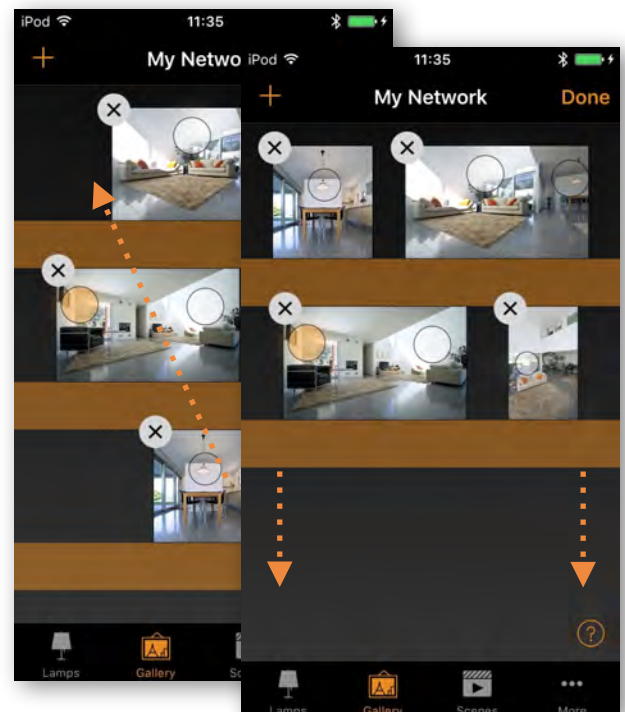
You can arrange the order and change the size of photographs in Gallery.

First select **Edit** at the top of the screen.

In edit mode you can drag and drop photographs to arrange them.

If you want to resize the photographs, move the orange bar up or down between the photographs. Note that this feature is only available for Apple iOS.

Confirm the changes by selecting **Done**.



## Scenes

In the **Scenes** tab you can create different lighting situations for different occasions. It is possible to control multiple luminaires with a single scene to create perfect ambience for different occasions and needs. The same luminaire can also be used in several scenes.

Creating your first basic scene:

Select **Edit** and **+** then enter a name for the scene and select **Add a scene**.

Select and adjust the luminaires for this scene. With **+** you can add all luminaires and with **-** you can remove all luminaires from the scene. You can adjust the luminaires separately or if you want to have same dim level or colour for all you can use **Luminaires in scene** control to adjust all luminaires in the scene.

If you want to add luminaires that are in a group double tap the group to open the selection screen.

If you want to add all luminaires in the group to the scene tap on the **+** sign on left bottom corner. Or if you want to remove all the luminaires in the group from the scene tap on the **-** sign

To adjust all the luminaires in the group use basic gestures anywhere on the group area (in iOS app). In Android app close the group with **Close** and then you can adjust all luminaires in the group from the group control icon.

To change the name, icon and colour for the scene control tap on the settings icon on bottom right corner. Use the colour palette to define a colour for the scene icon, if required.

If you don't want the scene to be visible in scenes tab you can use the **Hidden** option. To get back to the scenes tab, select **Done**.

To create more scenes just select the **+** sign at the top of the scenes tab. You can also copy scenes by tapping and holding on top of them.

*Tip: also select any luminaires which should be off during the scene and adjust their brightness level to 0%.*



# Scenes

## Circadian scenes

Circadian rhythms can be enabled by selecting the graph icon.

A circadian rhythm allows automatic colour temperature management for basic scenes by using a response graph that displays the hours of the day and colour temperature. When a circadian profile is enabled for a scene it will look up the colour temperature from the response graph when the scene is activated and every minute after that, until the scene is deactivated. Note that it can be used simultaneously with daylight control.

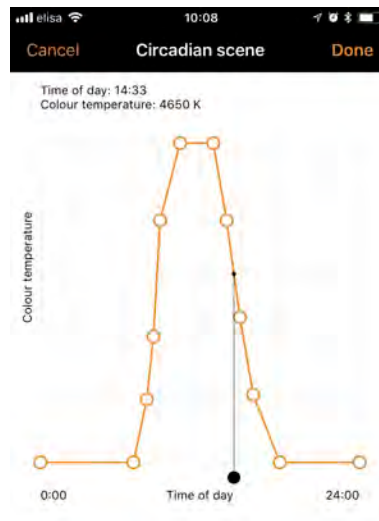
To add a circadian rhythm to a scene, select the circadian graph icon at the bottom of the page. Select *Add a new profile* or the *Default* profile and then tap on the response graph below. You can then adjust the response graph to your requirements. The time of day can also be moved to help you select when your circadian rhythm should start and finish.

Multiple rhythms can also be created and rhythms from other networks listed on the same device can also be imported.

Select any area on the graph to create a new marker point. Use the rubbish bin icon to delete a highlighted graph marker point.

Use the *Switch Form* option to change the response graph form from a smooth graph to a stepped graph.

Select *Done* when your rhythm is complete.



# Scenes

## Daylight control

To change the daylight control mode, select the light contrast icon. Below is a description of each available setting:

**Basic (ON/OFF)** Luminaires will switch ON or OFF based on two configurable threshold levels. Sensors may or may not be affected by the nearby luminaires and the mode only operates when it is the highest priority item on control hierarchy.

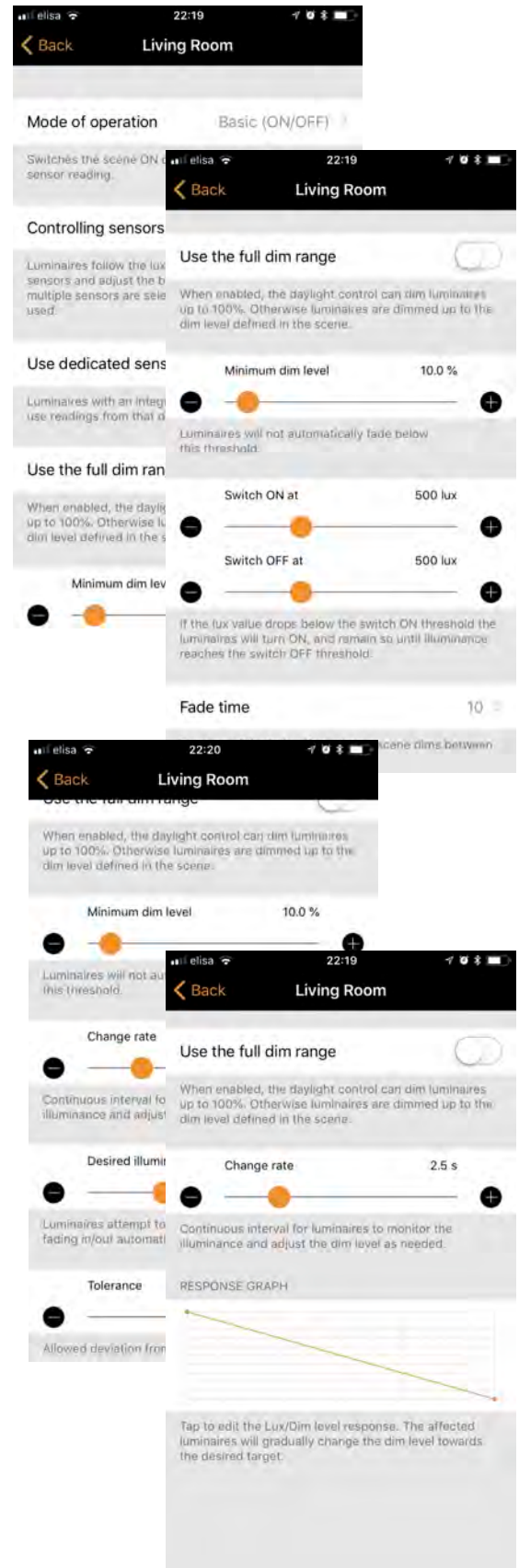
**Open loop** Luminaire output level (0-100%) is obtained by comparing the sensor's lux reading against a response graph. Sensors should not be affected by the luminaires in the network and this mode can operate on the control hierarchy even if it is not the highest priority item. Some examples of this are: a group of luminaires controlled by a daylight sensor installed in a separate location to the luminaires, or controlled by a sensor facing towards a window away from the luminaires.

**Closed loop** A target lux level is manually specified and the sensor will actively try to reach and maintain the lux level via a feedback loop (by observing the results of its own changes). Sensors are affected by luminaires and this mode can only operate when it is the highest priority item on the control hierarchy. An example of this is a group of luminaire controlled by a daylight sensor located in the same area as the luminaires.

**External** Similar to the *open loop* option, but is based on a 0-100% dimming signal rather than a Lux level. This option is designed to be used to combine a Casambi unit with a sensor which is not Casambi-activated. Examples include a CBU-ASD connected to a non-Casambi activated sensor, or when dimming is performed by an external DALI controller or DALI sensor.

Casambi-ready sensors created by our partners already contain the Casambi firmware so there would be no need to use the *External* option with those devices.

See the Appendix for a detailed explanation of each daylight control option.



# Scenes

## Creating Animations

In the *Scenes* tab it is also possible to create animations. Animations are a special type of scene that fade from scene to scene. Animations can be activated in the same way as standard scenes and it is also possible to set animations to repeat.

Select *Edit* and then the **+** in the top right corner. Then select *Add an animation*. Note: at least one scene must already exist in order to create an animation.

Next you need to add animation steps. Steps are scenes and waiting times. You can add as many steps as you like.

Example animation:

Add Scene Red, fade time 10 sec  
Add wait 3 min  
Add Scene Blue, fade time 10 sec  
Add wait 5 min  
Add Scene All Off, fade time 10 sec

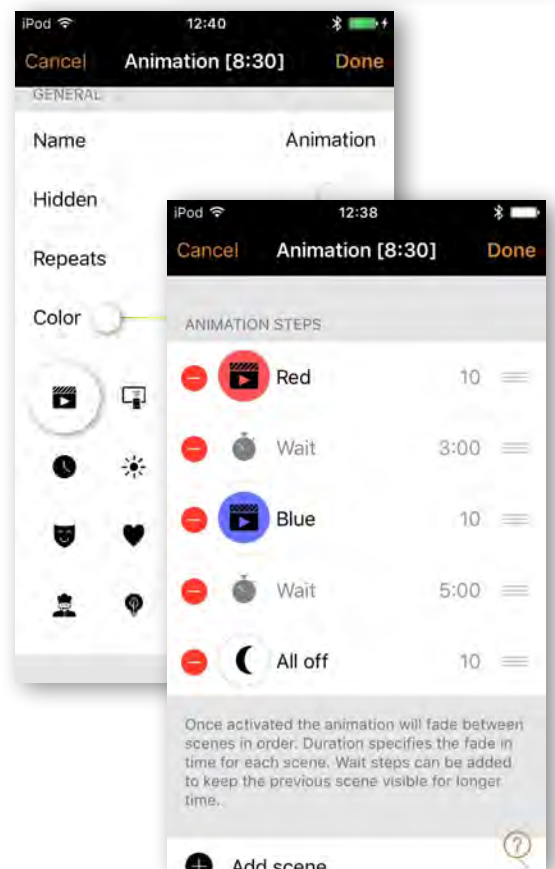
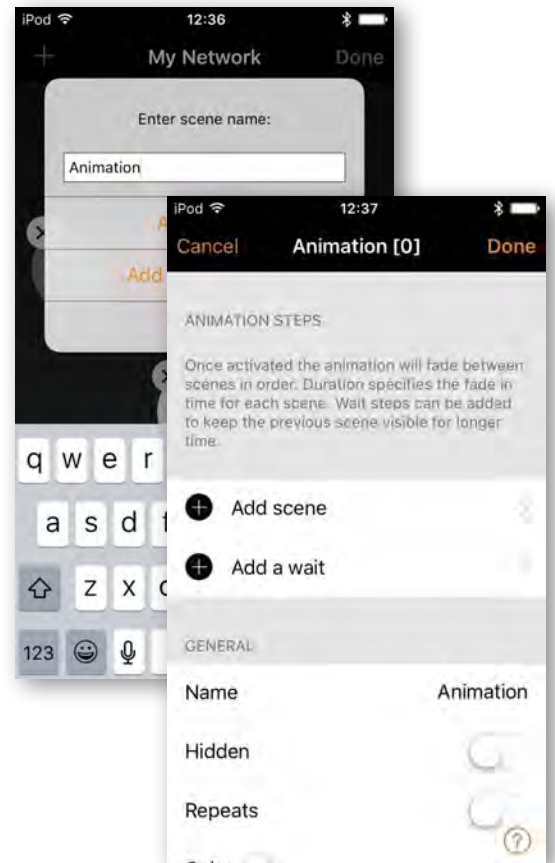
This animation setting will fade in to scene Red in 10 seconds and Red will be active for 3 minutes. Then the scene Red will fade into scene Blue in 10 seconds and Blue will be active for 5 minutes and fade out in 10 seconds.

Under the *GENERAL* section you can set the animation to repeat. You can also change the name, colour and icon. The animation can also be hidden from the Scenes tab view if needed. It will, however, reappear once *Edit* has been selected.

When you have finished editing the animation, select *Done*.

The time displayed next to the animation's name is the total time length of the animation.

*Tip: you can also use timers to control animations. This way an animation can be turned on and off based on time.*



# Scenes

## Time-based scenes

Time-based scenes can be used to alter dimming levels of scenes at specific times. While this can also be achieved by using a timer, a time-based scene has its advantage in that it can be triggered so that a luminaire is not permanently on.

For example:

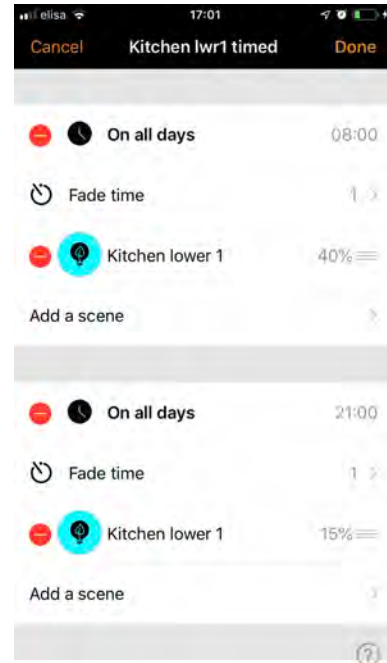
A time-based scene (*Kitchen lwr1 timed*) is created to set scene *Kitchen lower 1*'s dimming level at 40% between 08.00 and 21.00. Between 21.00 and 08.00, the dimming level will be 15% (to not disturb people if the scene is activated during the night).

The scene is not running 24 hours / day. Instead, a sensor triggers scene *Kitchen lwr1 timed* whenever presence is detected. Depending on when the time-based scene is triggered, it then sets the dimming level of scene *Kitchen lower 1* appropriately.

To create a time-based scene, follow the same procedure for a basic scene, but then choose:

- the time and days when it should alter the basic scene
- the fade time
- the basic scene
- the basic scene's dimming level

Multiple conditions can be added using the **Add a condition** option.





## More - Timers

With timer function you can create a list of timers that will turn scenes or animations on and off based on time. For example, you can set a presentation luminaire to activate during office hours or set corridor lights dim to a lower level during the night.

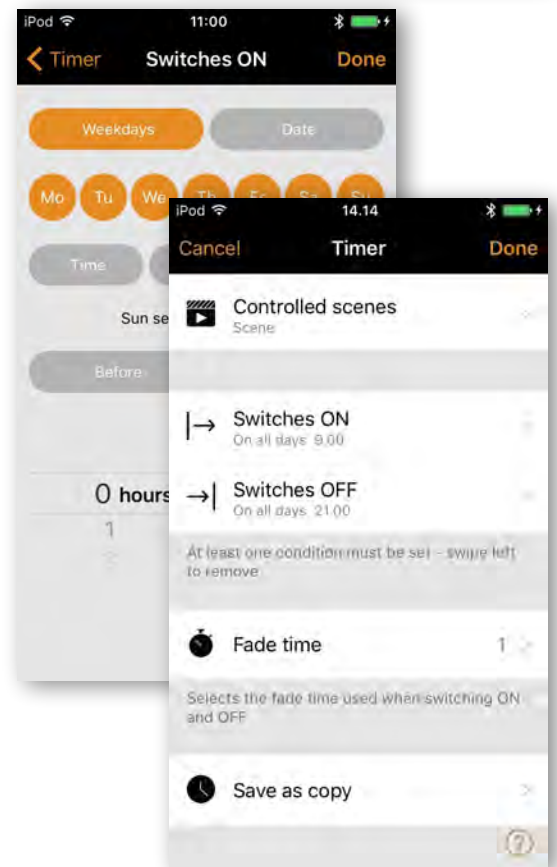
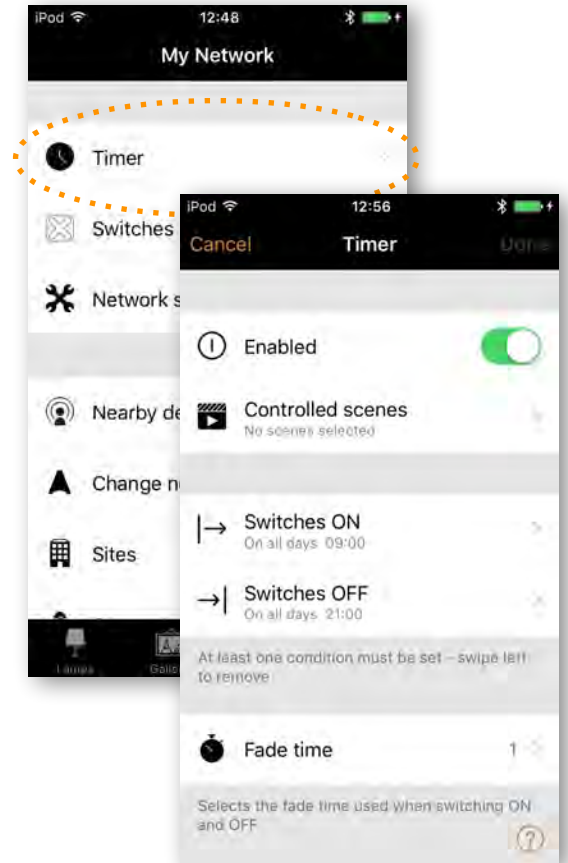
Go to *More* tab and select *Timers*. Create a new timer by selecting *Edit* on the left top corner and then *+* on the top right corner. Select the scene or animation you want to control with this timer.

Activate the *Switches ON* button and set the time when the scene should start. You can use weekdays or a specific date. For time you can set a time of day or use local sunrise and sunset to turn on the scene. To use sunrise/sunset the network location needs to be set. See the *Network setup* settings section for detailed instructions. Select *Done* to confirm the changes.

Activate the *Switches OFF* and select the time when the scene should turn off. The options available are the same as those available for the start time. You can also select *After* and set the length of time the scene will stay on. Select *Done* to confirm the changes.

It is also possible to set the *Fade time* for the scene. This means that when the scene is turned on the lights will slowly reach the light level in the scene. With faders you can change from one scene to other very smoothly.

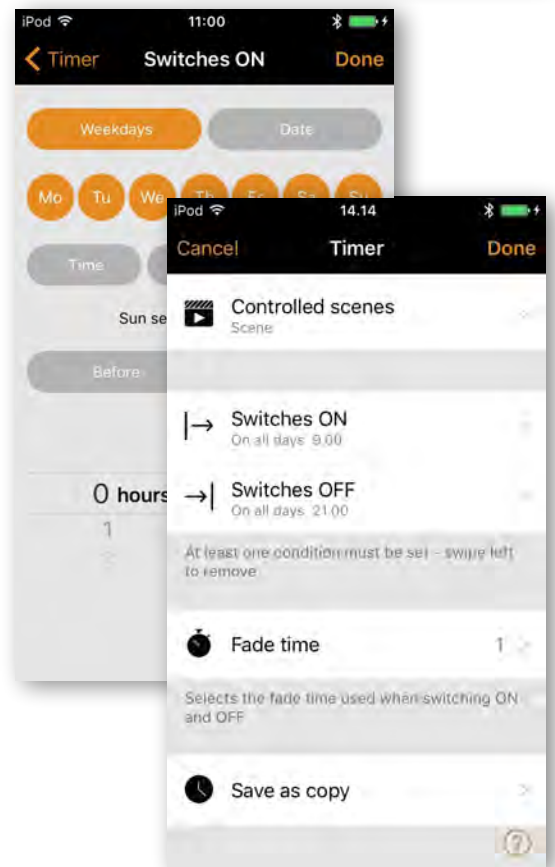
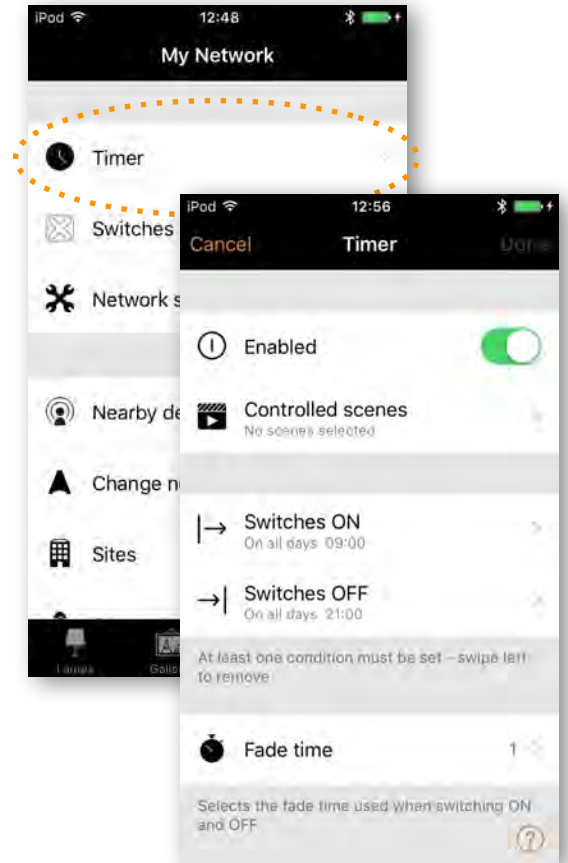
The fader will start when the timer is turned on. This means that if you set the scene to come on at 14:05 and you set a fader for 30 seconds then the scene is at full brightness at 14:05:30. The scene also fades to off with the same time, so if the scene goes off at 15:00 the light will be fully off at 15:00:30.



## More - Timers

It is also possible to Enable/Disable a timer with the button on top of 'Timer' screen. Confirm your settings by selecting *Done*. After saving a timer it is possible to copy that timer. Open the timer again and select 'Save as copy' from the bottom of the timer screen.

Casambi units will keep track of time when even one unit in the network is powered on all the time. In a situation where all units have been powered off, the network time needs to be set to the units again. In this situation please open the network in the Casambi app with modification rights to set the time again.



## More - Switches

With Switches it is possible to control Casambi enabled luminaires easily and wirelessly. Casambi-enabled switches and push-buttons appear under the *Switches* page after pairing them with the network. On this page it is possible to configure switches' preset buttons.

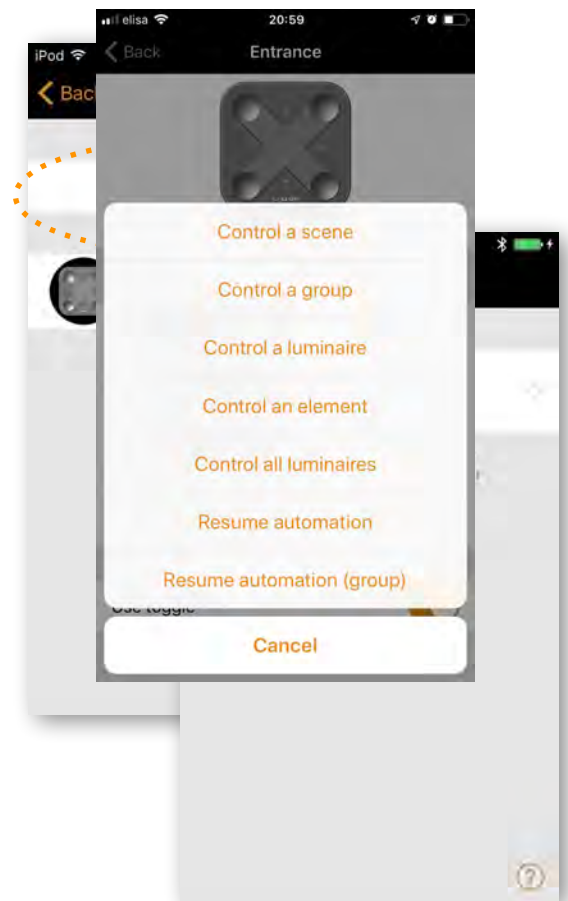
### Xpress switch

Casambi Xpress is a wireless user interface that brings flexibility to interior design. The switch can be kept wherever the user needs it and it gives direct access to all the important Casambi lighting control functionalities.

1. Press any two preset buttons on the Xpress and the Casambi app will automatically detect it. If you have an existing network, Casambi will automatically suggest to add Xpress to that network. Select *Add to 'My Network'* button. If a network has not yet been created, select *Take into use*.
2. After you have added the Xpress switch to the network navigate to the *More* tab and select *Switches* to configure the preset buttons.
3. Select the Xpress switch from the list of available switches and the configuration page will open. You can then assign a luminaire, scene, group, element or all luminaires to each button. It is also possible to assign *resume automation* options either for a group or the whole network.
4. Select the appropriate *Use toggle* function. When activated, will allow luminaires to be turned on and off. When deactivated, will prevent the switch from turning luminaires off.
5. Select the appropriate *Long press all OFF* function. This option allows any Xpress configurable button to be held down and turn off all luminaires in the network.

You can also rename the Xpress and change its icon to make identification easier.

Tap *Done* to save the settings.



## More - Switches

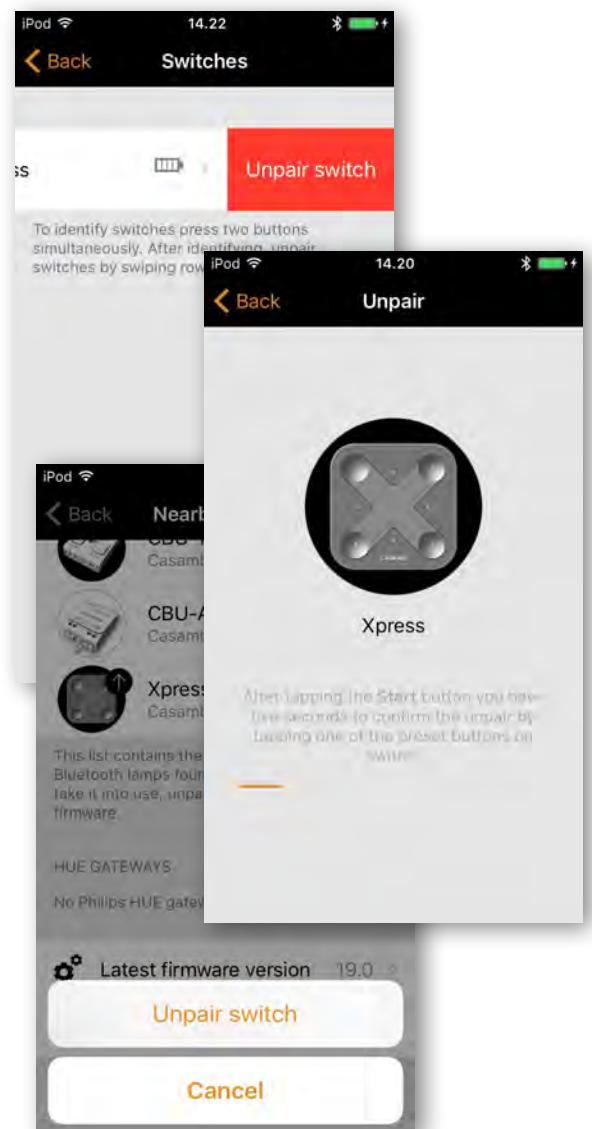
After configuring the buttons they will now control the assigned scene, luminaire, group, element or resume automation (see *Control Hierarchy*).

The first press will turn on the scene, lamp or group and second press will turn it off. The + and - buttons allow you to dim your selected device(s) up or down. The up and down buttons can be used to change colour temperature (of a tuneable white luminaire) and direct/indirect lighting ratio, provided that your luminaire supports these features.

## Unpairing an Xpress

To begin the unpairing process, first press any two preset buttons on the switch. There are two ways to unpair an Xpress switch: by selecting the *Unpair device* option within the switch settings page, or by swiping the device's row to the left (in iOS) or tap and hold (in Android) in the switches main page.

Make sure that the Xpress switch has the amber LEDs on when you do the unpairing. You will also need to perform the steps quickly before the switch turns itself off (no LEDs on).



## More - Sensors

In order to add a sensor to your network, the *Use Control Hierarchy* option must first be enabled. Once a sensor has been added to your network, it will appear on the *Sensors* page. For each sensor, there are a number of options which can be selected:

- *Presence*
- *Presence/Absence*
- *Absence*
- *Resume automation (group)*
- *Resume automation*

**Presence** activates up to two scenes when the sensor has been triggered.

**Presence/Absence** activates up to two scenes when the sensor has been triggered, and then activates up to two scenes when absence has been detected.

**Absence** removes manual control from selected scene(s) once presence is no longer detected.

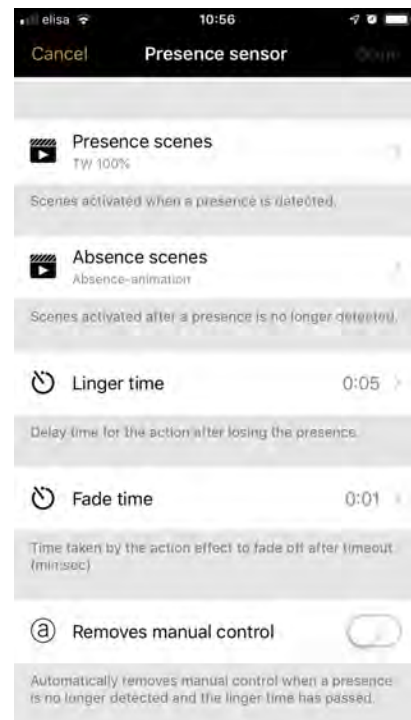
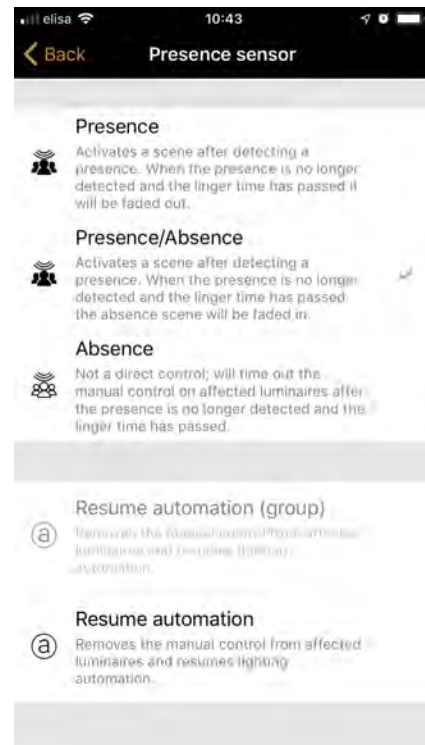
All of the above sensors types use **Linger time**, **Fade time** and **Removes manual control**.

**Linger time** is the delay between presence no longer being detected and the controlled scene(s) being affected.

**Fade time** is the time it takes the scene(s) to dim to 0%.

**Removes manual control** allows any previous manual control of a scene to be removed once presence is no longer detected and the linger time has also passed.

The two **Resume automation** options can be used to remove manual control from a specific group of luminaires or all luminaires in your network.



## More - Network setup

When you first take your luminaires into use the Casambi app will automatically create a network and add the luminaires to that network.

By default the network is *Not Shared* which means that its configuration is only stored on the device used to create it. This means that only that device can control the luminaires. Please see the *Sharing Settings* section if you want to use multiple devices to control the same Casambi network.

To change the network settings select the *More* page and the select *Network Setup*.

Within the *Setup* screen select *Network Settings*. There you can change the network name, set the time zone and the network's location. The location needs to be set if you wish to create timers using local sunrise or sunset as a trigger.

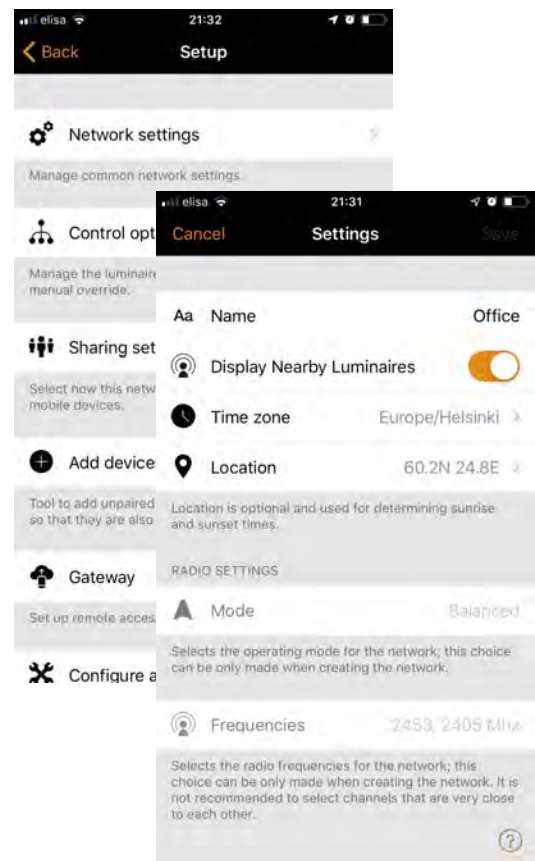
You can also select if you would like the nearby luminaires icon to be visible in the app. This selection will hide the *Nearby Luminaires* icon for all users in this network.

The network mode and network frequencies can only be configured when creating a network for the first time; it can not be changed after a network has been taken into use. The default mode for the network is *Balanced* and that should normal be used for most networks. If your network contains a very large amount of luminaires (100+) and they are placed physically close to each other, then the *Better Performance* option can be used. See *Change networks* section for instructions how to create a new network.

Network frequencies are always chosen in pairs. The first frequency is used as the primary frequency and the second frequency is then used if the mesh network detects interference on the primary frequency.

Once your network set-up is complete, select *Save* to finish.

*Tip: it is possible to have several networks in one mobile device. All created and visited networks will be listed in Networks screen.*



## Control options

The Control options page allows you to define the basic and automation controls (Control Hierarchy) of a Casambi network.

**Fade times** These three options allow you to alter the fade time for powering up a Casambi luminaire, turning a luminaire on/off (with the Casambi app or Xpress switch) and the dimming time when using Xpress + or - buttons.

**Remember last state** Activating this option will allow luminaires to return to their previous state when toggled on. Note: this is not the same as a luminaire's *Startup State For Power On - Default mode*, which is used after a luminaire has lost power.

**Activate timers on startup** When a luminaire is powered on and has received the network time, any timers associated with it will then activate.

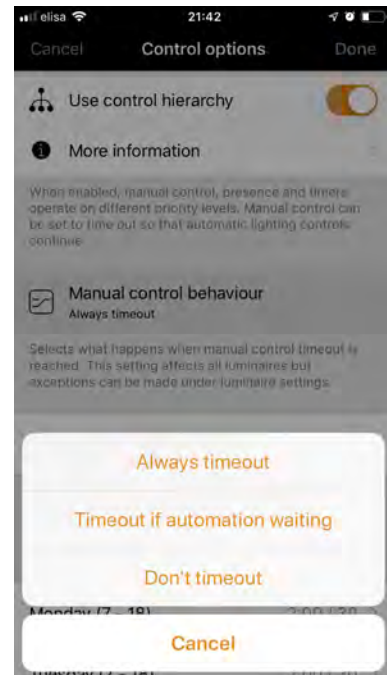
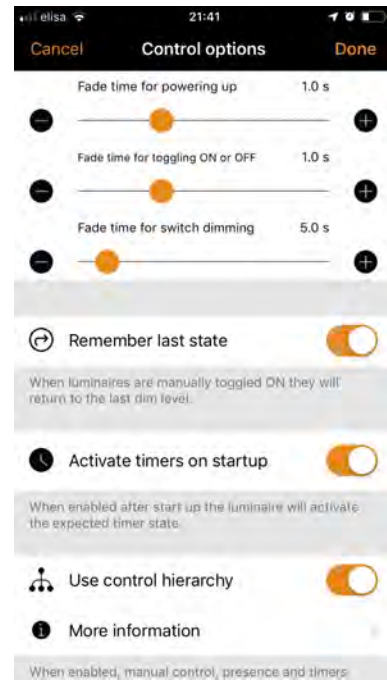
**Use control hierarchy** For a detailed explanation of the *Control hierarchy*, its priorities and its use with sensors and timers, please select the **More information** option, which can be found directly below the *User control hierarchy* option. The same information can be found in the Appendix of this guide.

When the *Control hierarchy* is activated, a number of options will then become available and a @ button will appear in the lower left of the *Luminaires* page to allow the end-user to manually resume network automation if needed.

The *Control hierarchy* options are:

**Manual control behaviour** This option selects how luminaires should react to manual control and if/when network automation should resume.

- **Always timeout** will always cause manual control of a luminaire to expire (based on the timeout period).
- **Timeout if automation waiting** will cause manual control of a luminaire to expire only if it is being controlled by the control hierarchy. For example, a presence sensor or a timer.
- **Don't timeout** will prevent any network automation from affecting any manually-controlled luminaires.



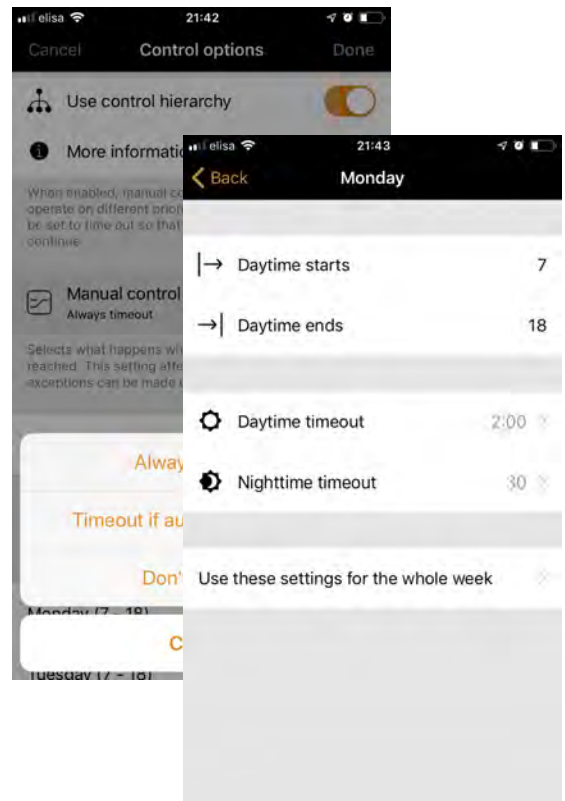
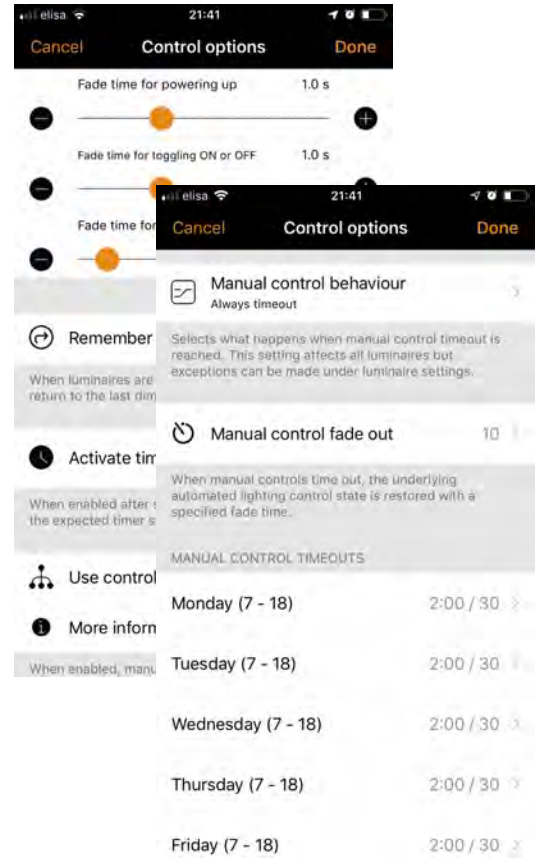
## Control options

**Manual control fade out** This option sets the time within which a luminaire will fade once manual control has expired.

**Manual control timeouts** The timeout value is the length of time a luminaire can remain under manually control before network automation resumes.

A separate timeout value can be set for each individual week day, its evening and night. The default values are 2 hours in the day and 30 minutes in the evening, but these can be changed to suit your installation.

The **Use these settings for the whole week** option allows you to set the same day and night values for the entire week, rather than have to manually edit the values for each week day.





## Sharing settings

To control luminaires also with other devices the sharing settings need to be changed. Tap on *Sharing settings* and then *Sharing*. There are four different options for network sharing:

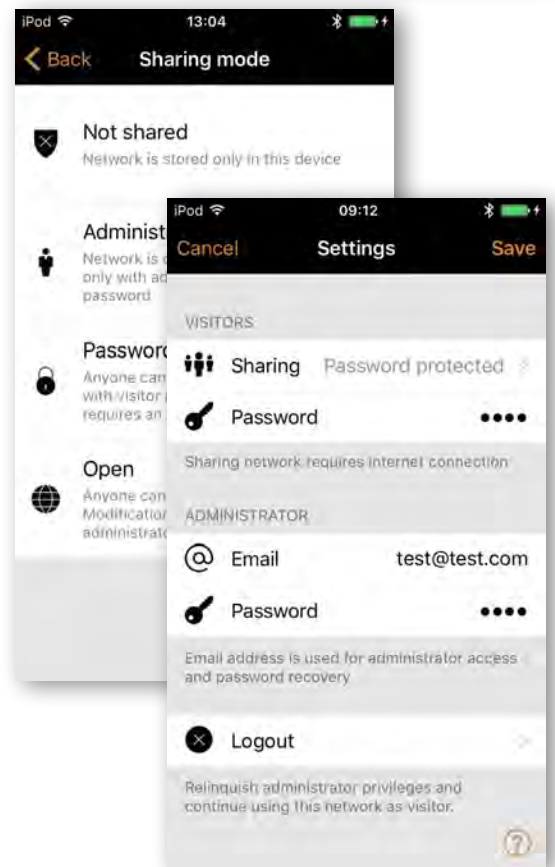
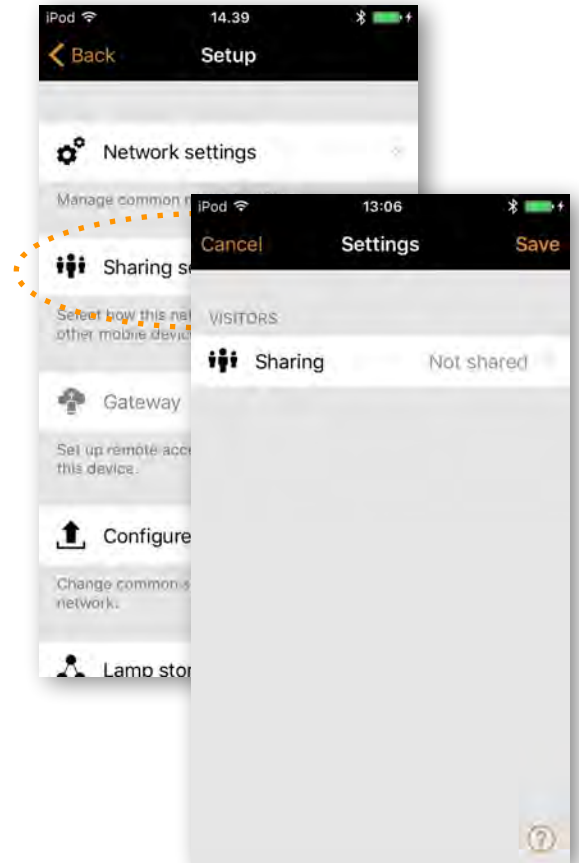
**Not shared** Access to the network is only possible using the device with which it was originally created and not uploaded to cloud service.

**Administrator only** The network is not automatically visible to any devices but it is possible to log in with admin email and password from the networks screen. Everyone who is able to log in, is also able to modify network. The Networks screen can be accessed from *More > Change network* or from the app's start page by selecting *My Networks*.

**Password protected** The network is automatically found by other devices but users need a password to access and control luminaires. If users want to modify the network i.e. add more luminaires, or create scenes, they need to have the administrator password. This type of network has two access levels: visitor and administrator. Visitors can not make changes but they can control lights.

**Open** The network is automatically found by other devices and there is no password for visitor access. If a user wants to modify the network they need the administrator password. This type of network also has two access levels: visitor and administrator.

Note: In order to be able to recover lost passwords, an administrator email address and password must always be used when creating a network.

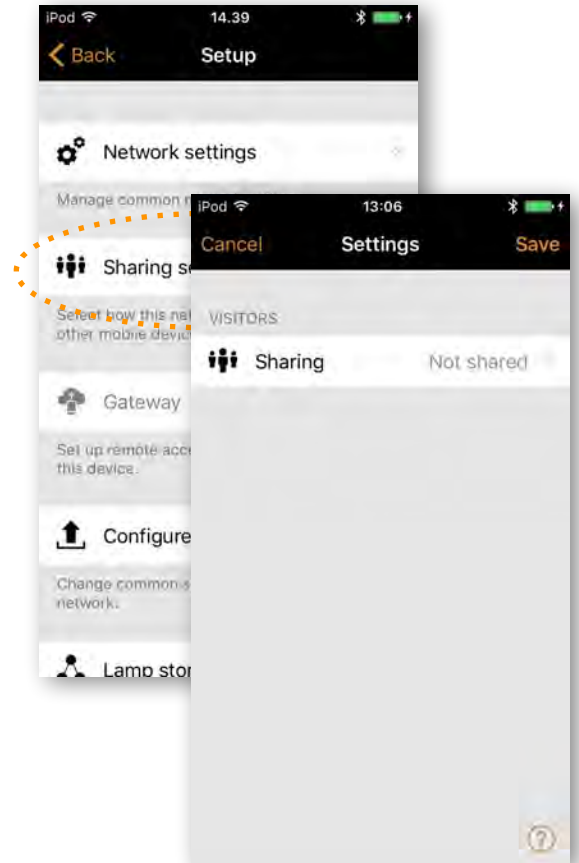


## Sharing settings

After changing the network sharing mode the administrator email and password need to be set for the network. A visitor password is needed for a password protected network so that other devices can access the network.

To save the new settings select **Save**. If the sharing setting is something other than *Not Shared* all the changes are uploaded to Casambi cloud service and the network can be accessed from other devices.

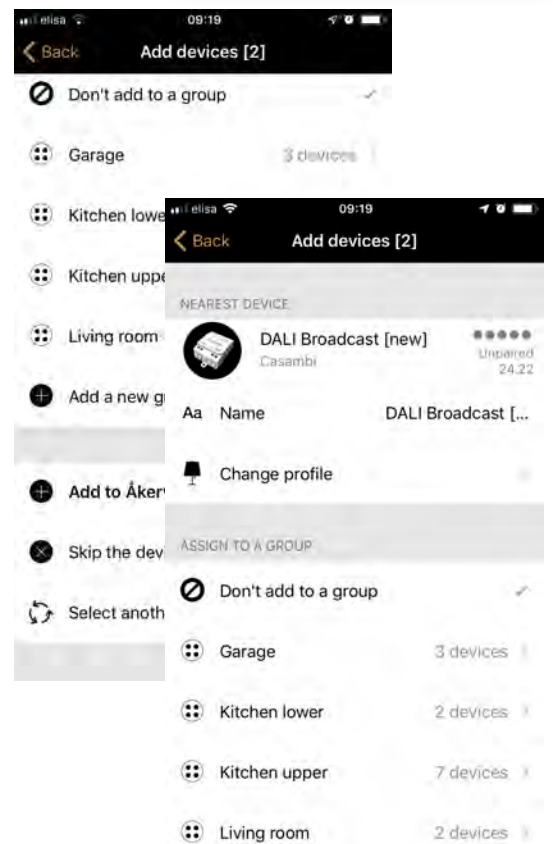
Using the *Logout* option, you can logout the device from a network. This might be necessary if the network needs to be removed from the *Networks* list or if you have commissioned a network which must be handed over to your customer. See *Change networks* for more information about deleting networks.



## Add devices

The Add devices option can be used as a commissioning tool to add devices to a network and identify them at the same time. When adding each device, you can:

- select a network
- select the groups to which it will belong
- create and add it to a new group
- change the device profile
- rename the device
- skip the device (and not add it to your network)



## Gateway

Using a gateway it is possible to control Casambi-enabled luminaires remotely. A network administrator can also remotely configure the network.

To enable remote access, a Casambi network needs to have one iOS or Android device acting as a gateway and the sharing settings for the network need to be Open, Password protected or Administrator only.

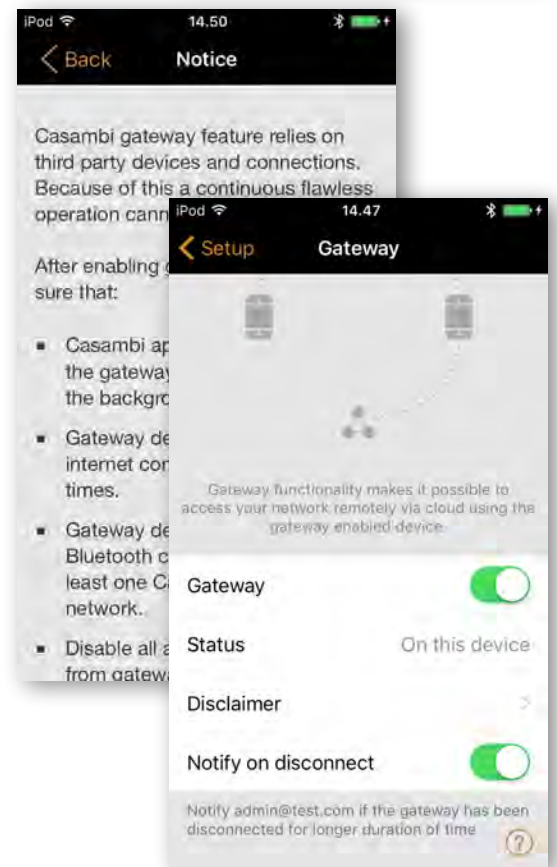
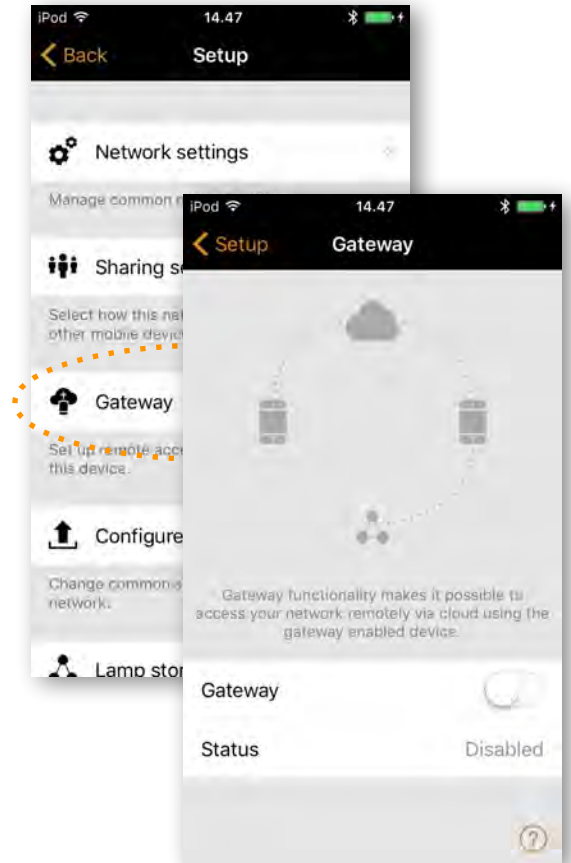
To set up the gateway device select *Gateway* in the *Network Setup* screen. If the *Gateway* option is grey and can not be selected, make sure the sharing setting is not set to *Not shared*.

Select the *Gateway* button to enable the gateway on the device. If you have added an email address for the network you can also enable notifications to that email address if the gateway is disconnected for some reason.

**Note:** The Casambi gateway feature relies on third-party devices and connections. Because of this, a continuous and flawless operation can not be guaranteed.

After enabling the gateway please make sure that:

1. The Casambi app is always open on the gateway device, at least in the background.
2. The gateway device has a reliable Internet connection at all times.
3. The gateway device has a reliable Bluetooth connection to at least one Casambi device in the network.
4. Disable all automatic updates on gateway device.
5. The gateway device is always plugged in to a power source.
6. Disable all power saving options from the device that might cause the Bluetooth or Internet connection to close.

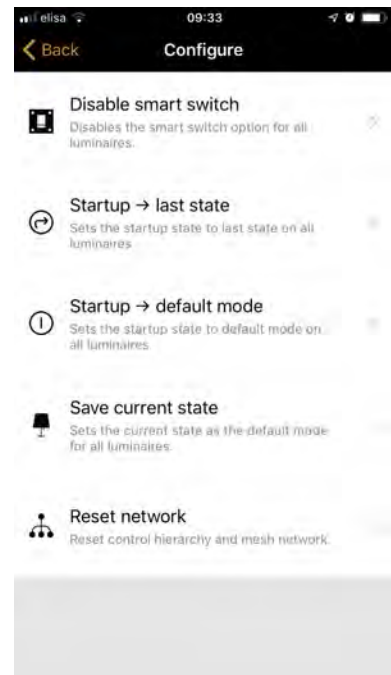


## Configure all luminaires

It is possible to configure all luminaires in one network by selecting the *Configure all luminaires* option under *Network Setup*.

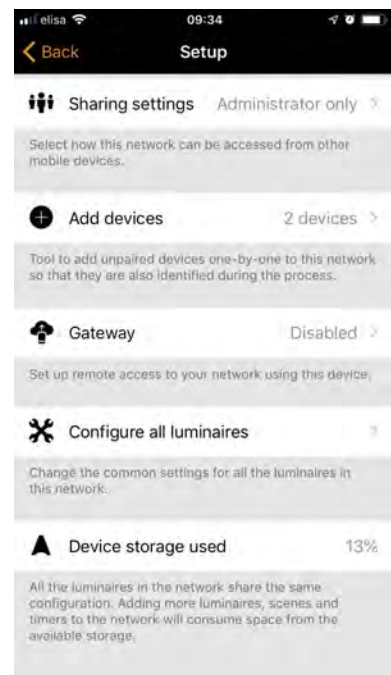
There are five settings that can be changed for all luminaires:

- **Disable Smart Switch** Disables smart switch option for all lamps.
- **Startup -> last state** Sets startup state to last state on all lamps.
- **Startup -> default mode** Sets startup state to default mode on all lamps.
- **Save current state** Sets current state as the default mode for all lamps.
- **Reset network** Can be used to reset the control hierarchy and mesh network. For example, you may need to reset the hierarchy after removing a timer.



## Device storage used

This is not an option but instead displays the amount of storage used on each Casambi device to store the network configuration.



## Nearby devices

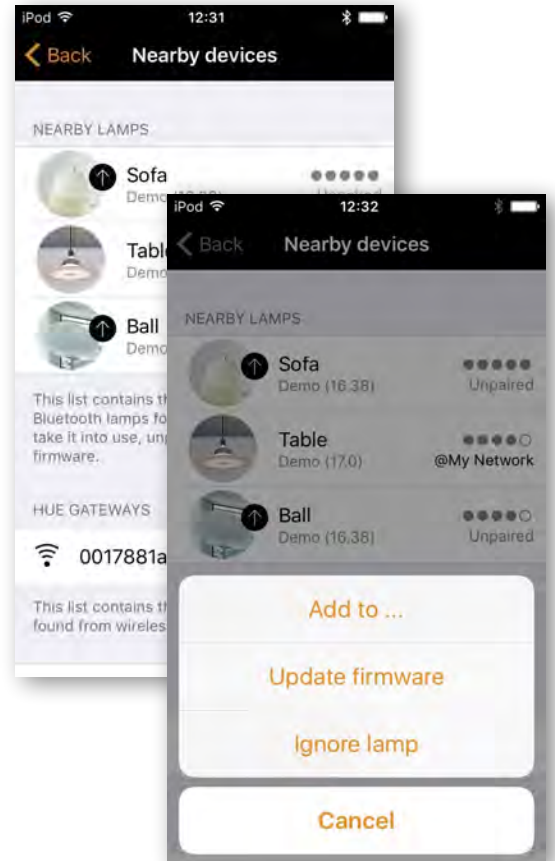
In the *Nearby devices* page you can see a list of all Casambi-enabled luminaires that are close-by.

In the list you can see the device's name, vendor, firmware version, signal strength and pairing state. If you have access to the network with which the device is paired, you can also see the network name.

By tapping on a luminaire you can take it into use (add to a network), unpair (remove from network), ignore or update the firmware of the luminaire. When you tap on the luminaire you can see the options that are available.

In this screen you can also check if there are any updates available for your Casambi-enabled device. Just select the **Check for updates** button at the bottom of the *Nearby devices* page and the Casambi app will connect to the cloud service and look for updates. If there is an update available you will then see an arrow above your device icon.

The latest firmware version can be seen at the bottom of page by selecting **Latest firmware version**. This will also display release notes for each software release.



## Change network

You can see the networks stored on your mobile device from the *Change network* page. The *Change network* page can be accessed by selecting *More > Change Network*, or from the start page by selecting *My Networks*.

In the list, all networks that have nearby powered-on devices, i.e. online networks, will displayed a black icon and offline networks display a grey icon. Choose a network by selecting the network name.

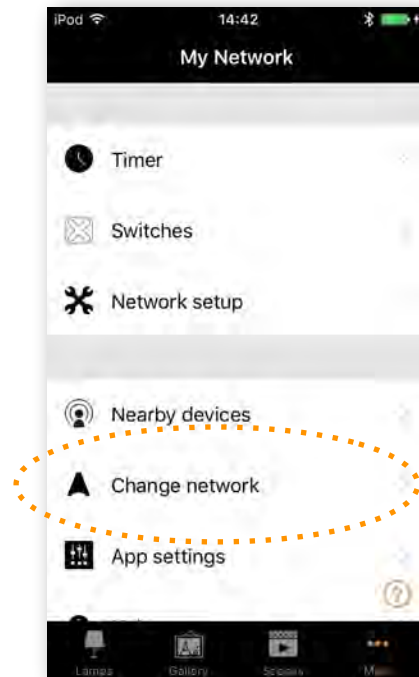
If you want to remove a network from the list swipe to the left (in iOS) or tap and hold (in Android) on top of the network and the delete option will appear.

If you have administrator rights to the network and you remove it from the list, the network is also removed from the cloud server. This means that the network is permanently removed and other devices can no longer use the network.

If you want to remove a network to which you have administrator rights to you need to log out first. Navigate to *More > Network Setup > Sharing settings* and select **Log out**. After logging out it is possible to remove the network from the list without removing it from the cloud server.

From this screen it is also possible to create new networks and log into networks with an administrator email and password.

Select *Log in to network* and enter the administrator email and password. You can access a network with the administrator email and password even if you are not in the range of the luminaires in that network.



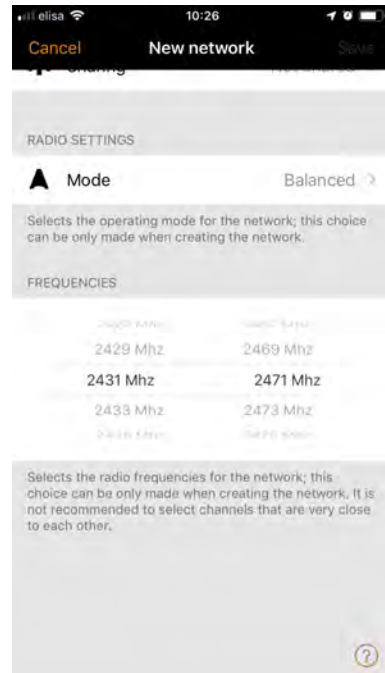
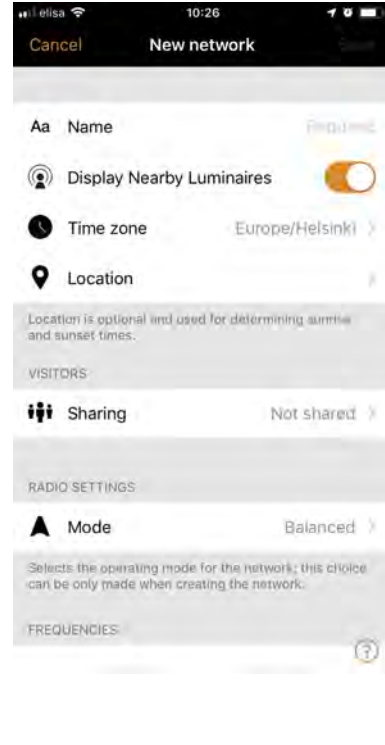
## Change network

To create a new network, select **Create new network**. In the *New network* screen you can assign a network name, time zone, location, sharing settings, network mode and network frequencies.

The network *Mode* has two options: **Balanced** and **Better performance**. Most types of network should use **Balanced** mode.

For networks with a large number of devices which are very close to each other (i.e. over 100 and close to each other) the **Better performance** mode can be selected.

You can also set the sharing mode at this point. If you would like other devices to be able to access this network, select *Open*, *Password protected* or *Administrator only*. For administrator access and password recovery, add an Administrator email and password.



## Change site

The *Site* feature allows you to control multiple networks simultaneously, create site-wide scenes and site-wide timers. For example, a building with three floors could be assigned a separate network for each floor and a site could then be used to connect the three floors and control them simultaneously.

In order to use this feature, it must first be enabled in the *App settings section of the app*. Each network in the site must also have a gateway enabled.

To create a Site:

- enable the Site feature by selecting *More > App Settings > Enable Site features*.
- create a Site account: *More > Account > Create account* and enter the required details
- navigate to *More > Change site* (or select *Sites* from the app's start page)
- select *Create a new site*
- add a site name

The site should now appear in the list of available sites in your Casambi app.

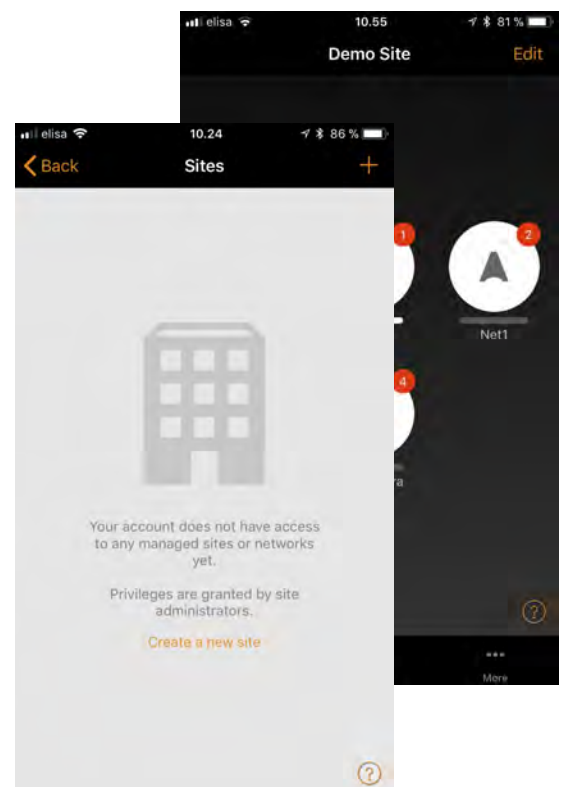
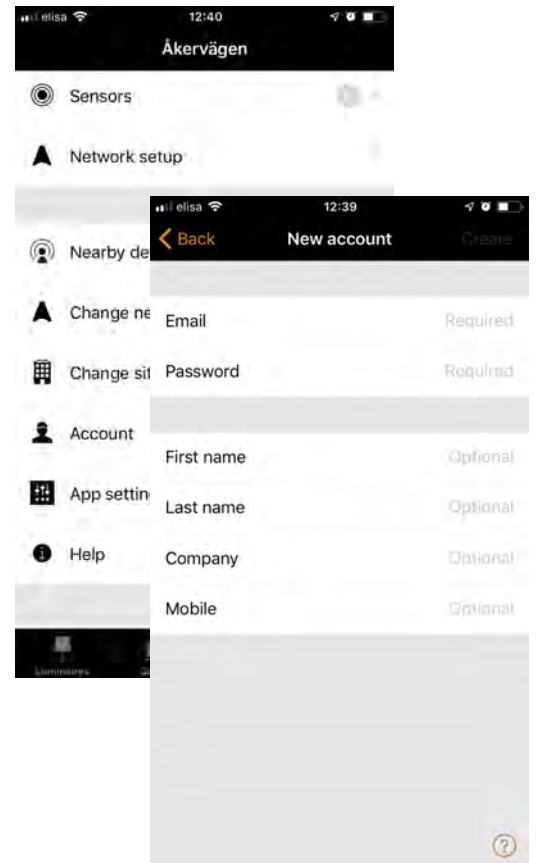
Add networks to the site:

- Select *Add a network to site* and then select a network from the list. More networks can be added by selecting the **+** icon
- Select *Done* when you have added your networks to your site

After creating a site, more users can be added to it. To add more users select *More > Privileges* and tap on the **+** sign. Enter the user's email address. Note that new users also need to have a Site Account.

There are three different levels of privileges:

- **User (default)** Can use the Site or network but cannot make any modifications
- **Manager** Can use the Site or network and can modify settings but cannot assign privileges to the other accounts
- **Admin** Can modify all the settings and can also assign privileges to other accounts





## Change site

### Controlling one network

In the *Networks* page it is possible to control a network in the same way as an individual luminaire. When selecting the network, all the luminaires inside the network will switch on or off. It is also possible to dim the whole network with swiping left or right, and colour temperature (if supported) can be changed by swiping up and down.

Double tapping a network will open it and from within that view it is then possible to control the network's individual luminaires.

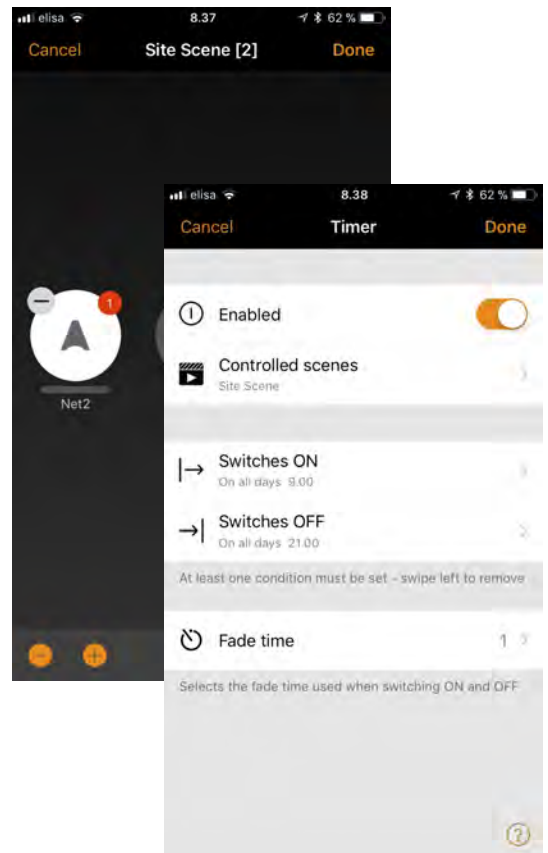
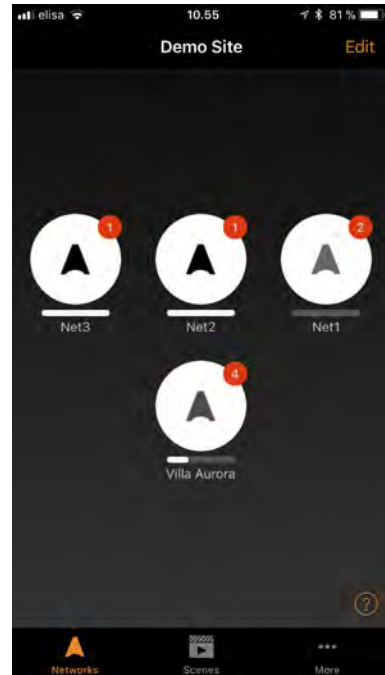
### Scenes

In the *Scenes* page it is possible to create site-level scenes and animations.

Site-level scenes can include luminaires from different networks. A whole network can be added to a scene. Individual luminaires can be selected by opening a network by double tapping on the network icon. Creating and editing site-level scenes is done in the same way as network-level scenes.

### Timers

It is possible to create site-level timers that control site-level scenes. Site-level timers can be configured in the *Sites > More > Timers* page. Site-level timers are configured in the same way as network-level timers.



## Resetting a network password

If you don't remember the password for your network it can be reset if you added a working administrator email address when setting up your network. After failing to enter the correct network password, the Casambi app will prompt you with a *Reset password* option. This option will then send a reset password link to the administrator email address specified in *Sharing settings*. The link will be active for 15 minutes.

## App Settings

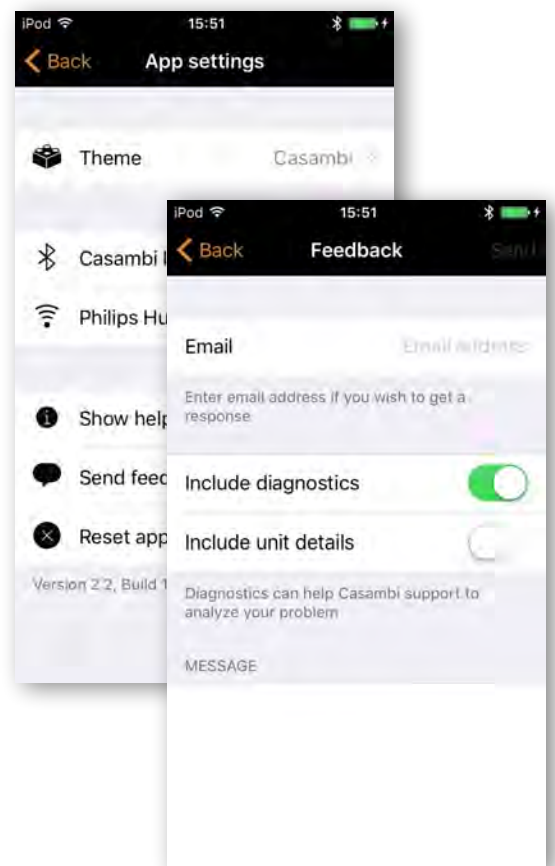
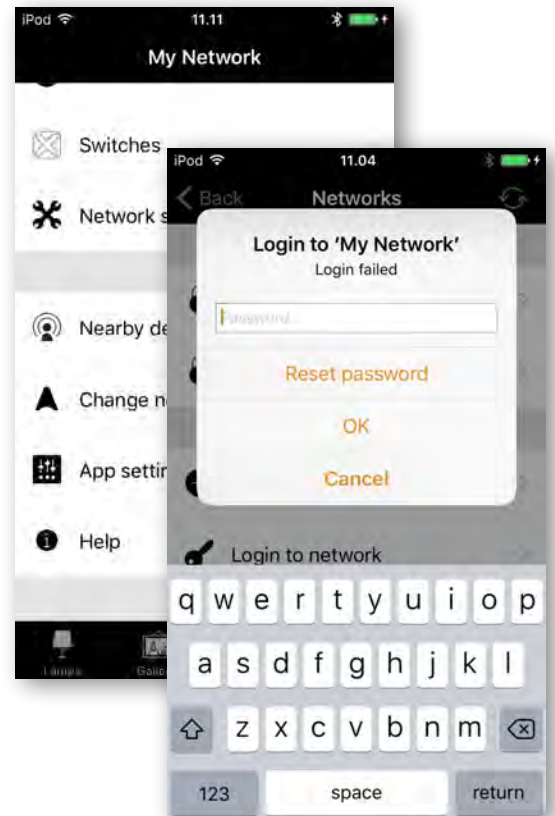
The App settings page offer the following options:

- change the Casambi app's language
- Automatically select the previous network you used
- enable/disable un-paired device notification
- enable/disable Bluetooth luminaires
- enable/disable a Philips Hue bridge
- enable/disable help buttons
- enable/disable the *Site* feature
- Send feedback to Casambi Technical Support (also used to request diagnostic trouble-shooting feed back)
- Reset application

Note: the *Reset application* option will reset all app settings, data and also delete any networks that you have visited from the device. **Use this option with caution.**

## Help

This sections displays a list of Frequently asked questions (FAQ) and release notes for Casambi each software version.



# Appendix

## Smart Switch

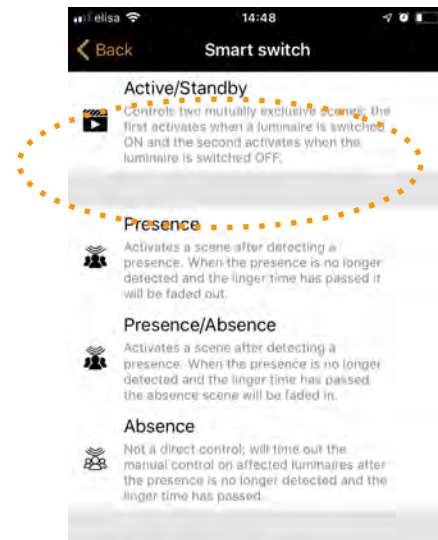
With Smart Switch feature it is possible to use ordinary wall switches as dimmers or control scenes with them.

The Smart Switch mode for the luminaire's power switch can be configured in Casambi app. It is possible to assign different Smart Switch modes to each Casambi enabled luminaire.

For example you can use Smart Switch to switch on several lamps when you come home or switch the lighting to be suitable for dinner party or watching a movie.

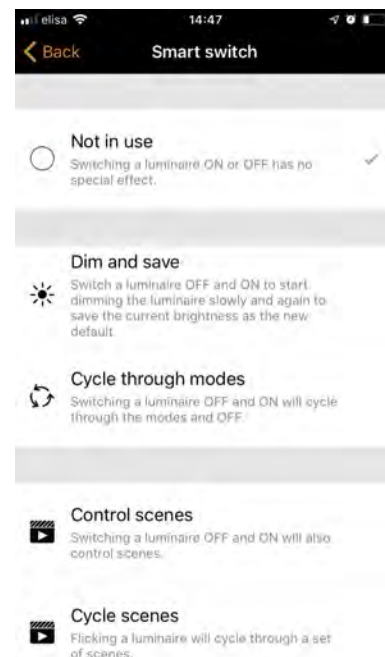
Go to *Luminaires* page and double tap the luminaire control you want to assign a Smart Switch mode to.

Under *Smart Switch* section, select the current mode to open the Smart Switch selection. The default mode is *Dim and Save*.



There possible *Smart Switch* modes are:

- **Not in use**
- **Dim and save** Controls one luminaire
- **Cycle through modes** Controls one luminaire
- **Control scenes** Controls one or multiple luminaires
- **Cycle scenes** Controls one or multiple luminaires
- **Active / Standby** Controls one or multiple luminaires
- **Presence** Replicates a presence sensor
- **Presence/Absence** Replicates a presence/absence sensor
- **Absence** Replicates an absence sensor
- **Resume automation (group)** Resumes automation for a single group
- **Resume automation** Resumes automation for the whole network



## Dim and Save

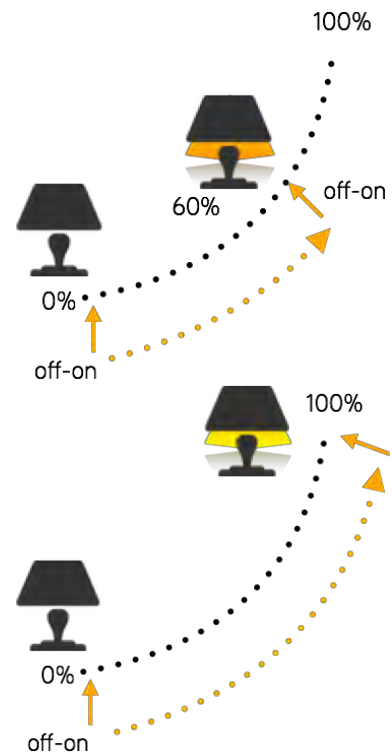
By default Casambi enabled luminaires are set to use the Dim and Save Smart Switching mode. This means you can use the luminaires power switch for dimming and setting the default light level.

To start the dimming process, quickly switch OFF and ON the light fixture from the wall or power switch. After flicking the switch the dimming process will start.

Once the light has reached the desired brightness level flick the power or wall switch quickly OFF and ON again to save the current level as the new default brightness for the luminaire.

It is always possible to change the default brightness by starting the dimming process again.

To set the default brightness level back to maximum, just flick the power or wall switch OFF and ON once and the dimming process will start again. When the brightness level reaches the maximum value it is set as a new default for the light fixture.

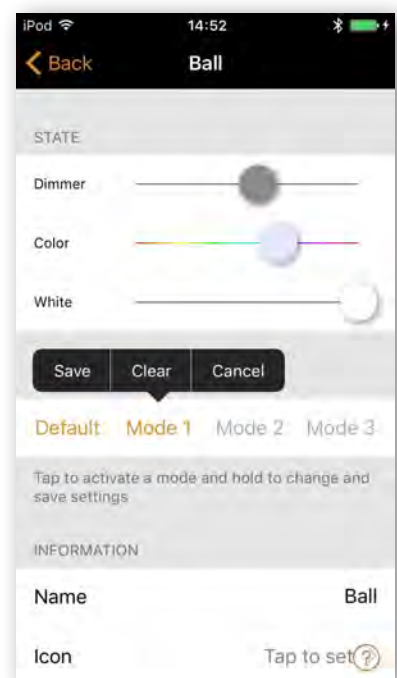


## Cycle through modes

If you have set different modes for the luminaire with Casambi app you can assign the power switch to control them. Modes can be different dimming levels, colours or colour temperatures. Flicking the power switch quickly OFF and ON will cycle between the different modes and off: Default, Mode1, Mode2, Mode3, Off.

To set a mode, adjust the light level, colour temperature or colour of a luminaire to its desired level, hold down the mode number you want to save the settings to and you will then be prompted with a Save message. Repeat the steps to set more Modes.

After you have set all the desired modes tap the Smart Switching mode and select Cycle through modes from the list.

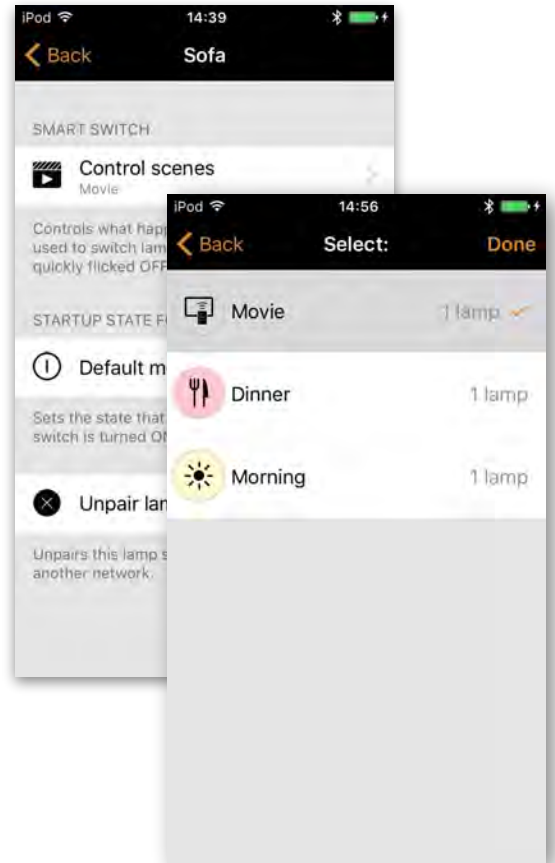


## Control Scenes

If you have created different scenes with the Casambi app you can control them from a single power switch.

Select which scene you want to control and turning on one luminaire will also turn on all other luminaires in that scene. Turning off the luminaire will turn off also all the luminaires that are currently controlled by that scene.

Select the 'Control Scenes' option from Smart Switching and tap on the desired scene to select it. Confirm changes with *Done*.



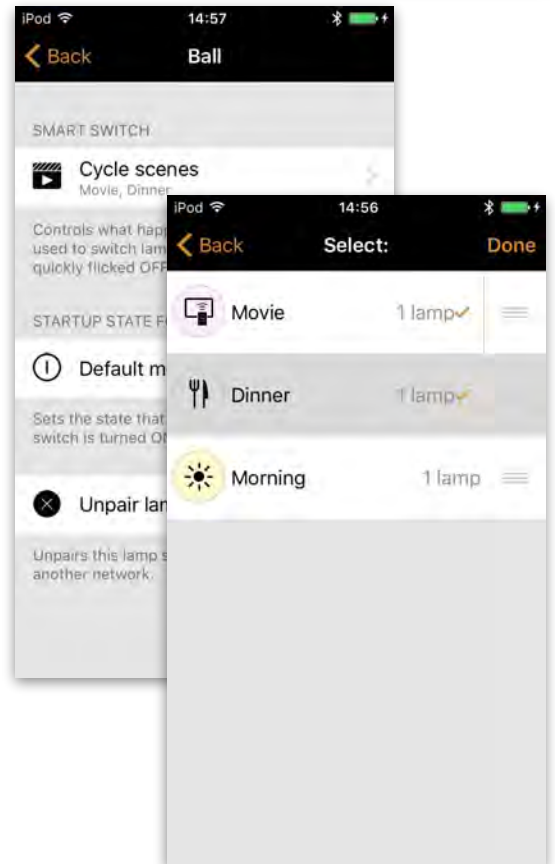
## Cycle Scenes

If you have created different scenes with the Casambi app you can cycle through them and off with one power switch. Select the scenes you would like to cycle through and flick the power switch off and on to cycle the selected scenes.

Select the *Cycle Scenes* option from Smart Switching and tap on the desired scene or scenes to select them. It is also possible to change the order of the scenes by dragging and dropping. Confirm changes with *Done*.

Example: selected scenes Movie and Dinner:

- Flick off/on > Movie scene activates
- Flick off/on > Movie scene deactivates and Dinner scene activates
- Flick off/on > Dinner scene deactivates

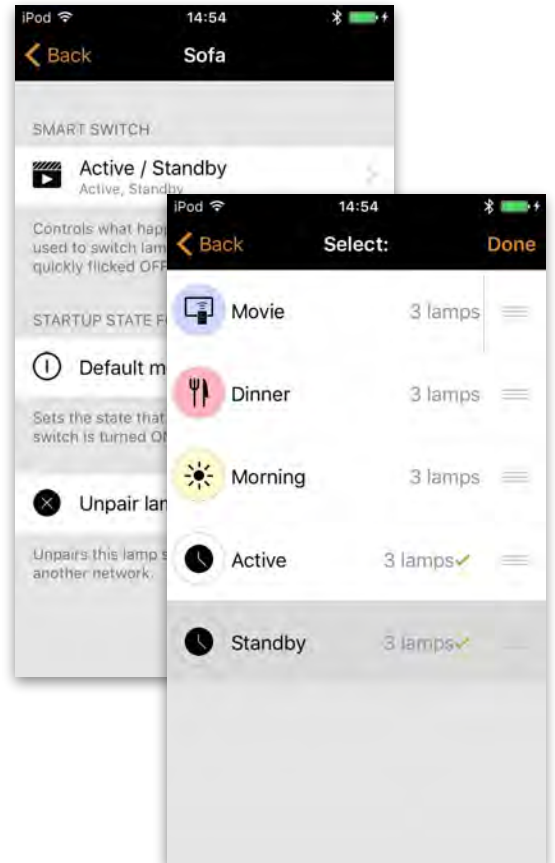


## Active/Standby

With Active/Standby Smart Switching mode you can control two scenes that have the same luminaires in them.

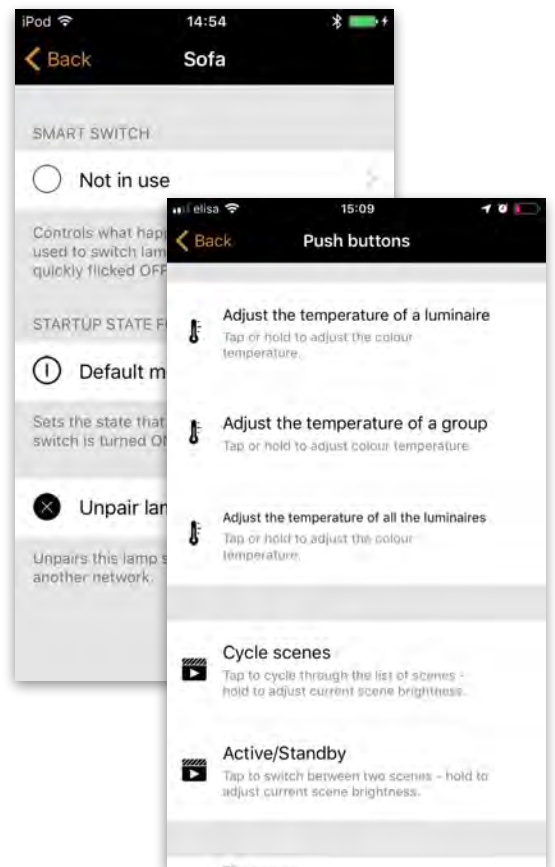
Create two scenes, one active scene that should turn on when the controlling luminaire is turned on and one Standby scene that is turned on when the controlling luminaire is turned off. This mode can be used for example with motion sensors.

When motion is detected the luminaires go to full light level and when there is no motion the luminaires are dimmed to 30%.



## Not in use

Sometimes it is necessary that the power switch doesn't do anything special when used. The *Not in use* option will disable our Smart Switching feature.



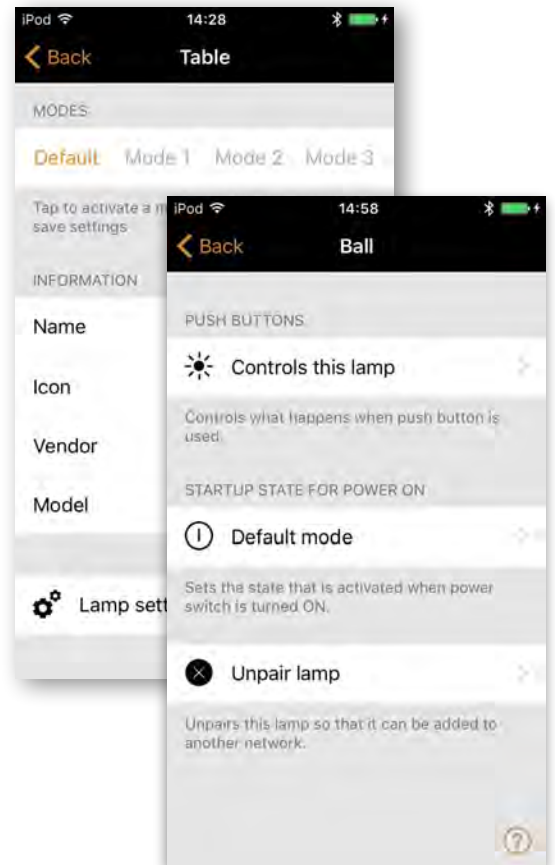
## Push Button

If you use a push-button to control your luminaire(s), you can select the configuration for the push button in the Casambi app. You can use it to dim the luminaire or control several luminaires with one push button. It is possible to assign different modes to each Casambi enabled luminaire's push button.

For example, you can use the Push-button to switch on several luminaires when you come home or switch the lighting to be suitable for a dinner party or watching a movie.

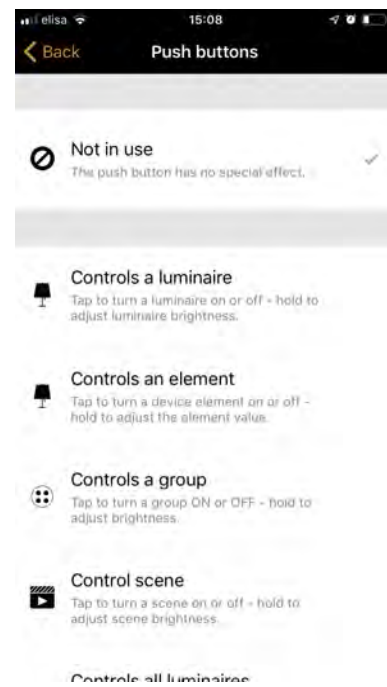
Navigate to the *Luminaire* page and double tap the lamp control in which want to change the push-button configuration.

Under 'Push Button' tap the current mode to open the Push button selection. As a default the mode is 'Controls this lamp'



The Push Button modes are:

- Not in use
- Controls a luminaire
- Controls an element
- Controls a group
- Control scene
- Controls all luminaires
- Adjust the temperature of a luminaire
- Adjust the temperature of a group
- Adjust the temperature of all the luminaires
- Cycle scenes
- Active/Standby - controls one or multiple luminaires
- Presence
- Presence/Absence
- Absence
- Resume automation (group)
- Resume automation





## Control Hierarchy

Control hierarchy allows co-operation with manual lighting control (app, switches and push buttons) and automated controls (presence sensors and timers). Each control action has a specific priority and if multiple controls are simultaneously controlling the luminaire it will adhere to the most highest priority.

When the highest priority control is removed the luminaires will fade into the next highest priority. If the hierarchy is empty the luminaire will turn OFF.

### Priority levels

- Manual control (App, switches, push buttons)
- Date timers (with sensor override)
- Weekday timers (with sensor override)
- Presence sensors
- Date timers
- Weekday timers

### Manual control

Manual lighting control has the highest priority and will always override the automated control. It can be set to timeout or stay on luminaires indefinitely. There is a configurable timeout for manual control assigned for day and night periods of each weekday.

When the timeout is reached the manual control will be removed and the luminaire fades out to the next highest priority control. Setting the timeout value to zero will disable the timeout, but in this case manual control is always hiding presence sensors and timers.

When luminaires display the @ icon it indicates that it is under automated lighting control (presence sensors or timers). Tapping the @ button will remove the manual control from all luminaires or the opened group.

## Control Hierarchy

### Presence sensors

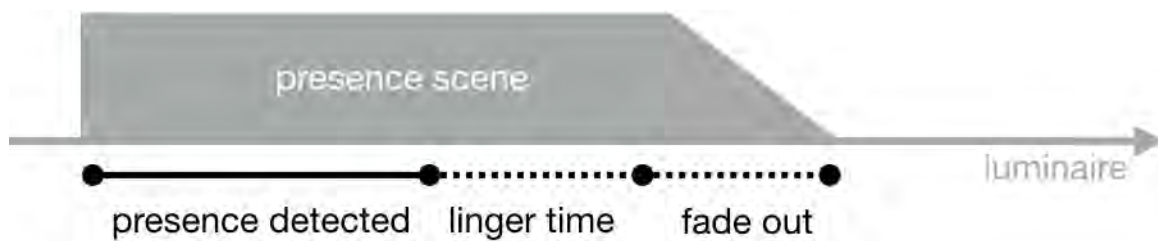
Presence sensors operate on second highest priority and use scenes to control the luminaires. Up to ten sensors can simultaneously control individual luminaire, and when multiple sensors are affecting luminaire it will be following the presence scene with highest dim level.

Each presence sensor has a setting for linger time which dictates how long the scenes will stay on after presence is no longer detected. After linger time passes the associated luminaires will be faded over the configured duration.

Presence controls can be attached to smart switch, push button or dedicated presence sensors. Each action can have two scenes; typical use case is to use one scene for actual controlled area and another scene for associated emergency route. Note that if multiple scenes are used there should not be overlap between affected luminaires.

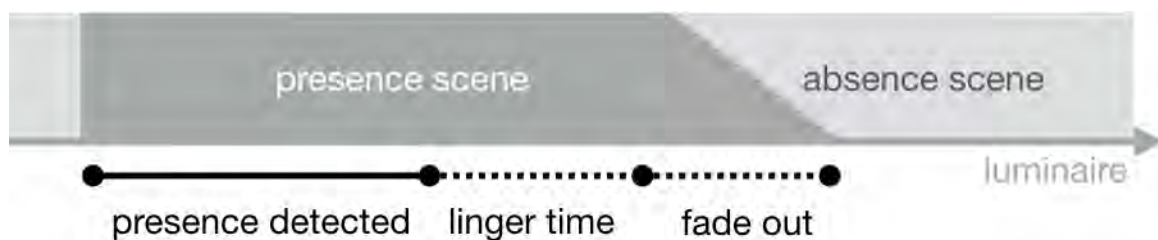
### Presence control

Activates a scenes when presence is detected and deactivates it after presence is no longer detected.



### Presence/Absence control

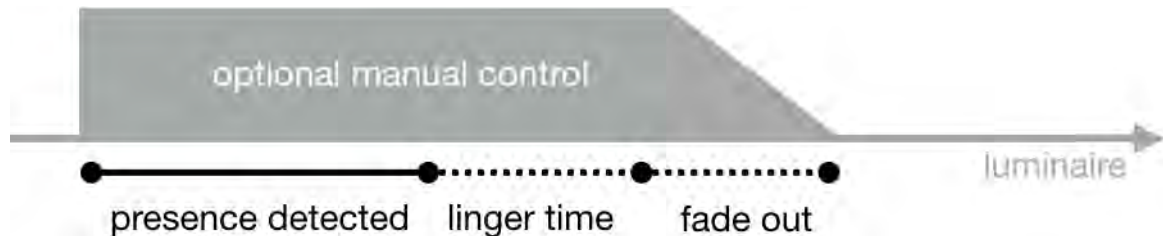
Activates a scene when presence is detected and changes to absence scene after presence is no longer detected. Note that absence scenes will only have effect those luminaires that were affected by presence scenes.



## Control Hierarchy

### Absence control

Absence control allows luminaires can be manually controlled and when presence is no longer detected it will remove the manual control (if any.) Scenes are only used to select the affected luminaires.



### Timers

Timers are split into two categories: date based (meaning start / end times are based on specific date) and other timers. Date based timers has higher priority than the other timers, so they will override weekday based rotations. Thus it is possible to use them to implement, for example, holiday season override.

Timers can be set to override presence sensors; this could be used, for instance, to prevent sensors from activating at luminaires at certain time of day.

It is also possible to configure the timers to automatically activate when luminaire is powered on. After receiving network time the luminaire will determine the expected timer state and activate them. Note that after switching the power ON there will be a small delay before this happens.

Tip: during commissioning the luminaire control hierarchies can be reset by selecting More → Network Setup → Configure all luminaires → Reset Network.

CASAMBI  
[www.casambi.com](http://www.casambi.com)