

Panama GEN2



Product informaton

Tool free open design LED tri-proof light, 60w can adjust 55w/50w/40w, 5x1.5mm² Linkable, L1, L2, L3,N, E

Features

- * Tool free open
- * Suitable for suspended, ceiling installation
- * LED efficiency 120lm/w
- * Power switchable
- * 5x1.5mm² Linkable, L1, L2, L3,N, E

Product data

General Informadon	
Light source type	LED
Number of LED module	1 Pcs
Beam angle of LED module	120°
Color temperature	4000K
CRI	80
LED module replaceable	Yes
Number of LED driver	1 Unit
Driver included	Yes
L90 lifetime of LED module	26,000 hrs
L80 lifetime of LED module	54,000 hrs
LED module lumen	7200 lm
Operaring and Electrical	
Input Voltage	220-240 Vac
Input frequency	50 to 60 Hz
System wattage	60W
Inrush current	19A
Inrush time	280µs
Power factor	0.9
Surge protection	2KV(L/N-Ground)
Ambient temperature range	-20°C to + 45°C
Performance ambient temperature Tq	+25°C
SDCM	3 steps
Optical type	PC

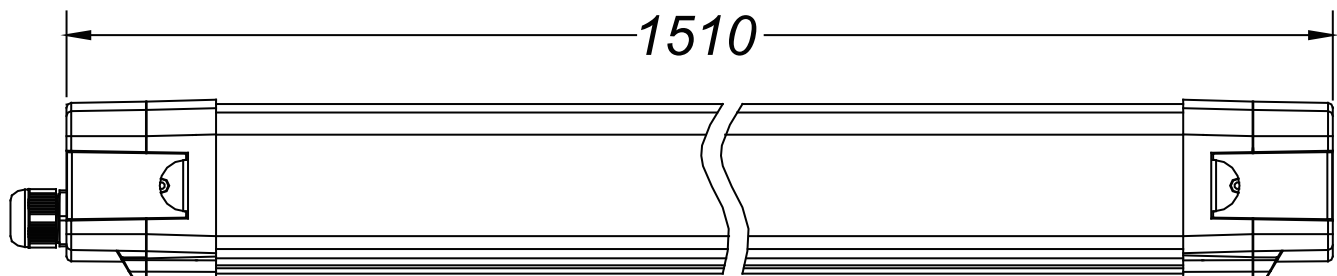
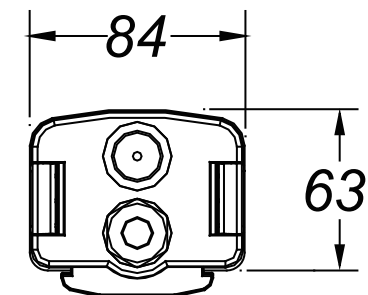
Control and dimming	On/Off
Connection type	5 pole connector
Protection class IEC	Safety class I
Glow-wire test	Temperature 850°C
UGR	28
PstLM	<1
SVM	<0.4
CE Mark	Yes
EU RoHS compliant	Yes
Net weight (piece)	2.32Kg
Dimension	
Overall length	1510mm
Overall width	84mm
Overall height	63mm
Mechanical and Housing	
Housing material	AL
Optical material	PC
Housing color	Sliver
Heatsink material	AL
Ingress protection code	IP65
Meeh, impact protection code	IK10
Remarks	
LED driver failure rate at 50,000hrs@25°C	5%
Power consumption tolerance	±5%

Specificatfons

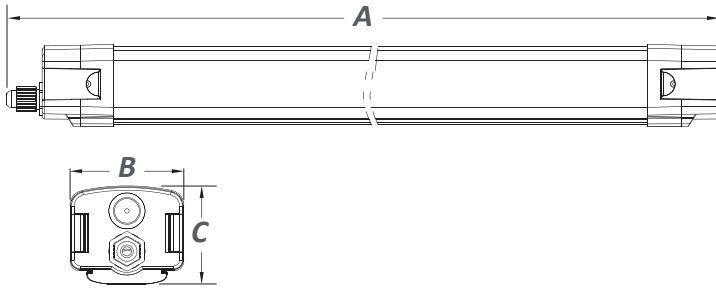
Varenummer	LED Module Wattage*	Length mm	Width mm	Height mm	CCT (Kelvin)*	Rated Flux (Lm) *	CRI (Ra)*	Beam angle*	Energy Class	Dimming technology
5701092111005	60	1510	84	63	4000	7200	80	120°	E	NO

* Due to the special conditons of the manufacturing processes of LED, the typical data of technical parameters can only reflect staHshcal figures and do not necessarily correspond to the actual parameters of each single product which could differ from the typical value. A max 10% tolerance is deemed to be acceptable in any case.

Dimension drawings

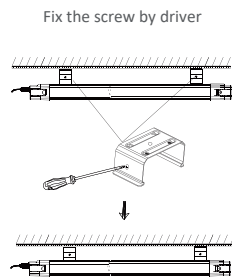
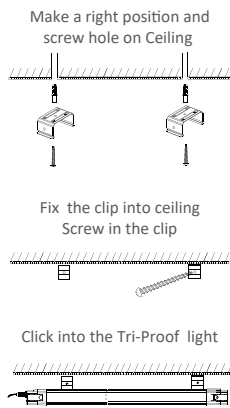


Installation manual

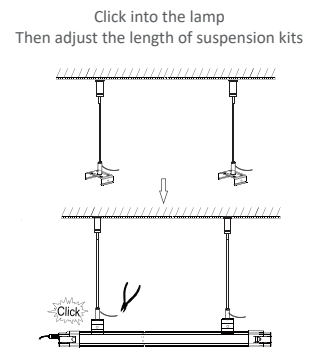
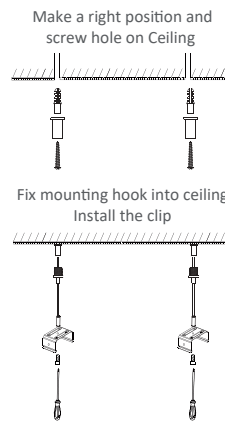


Model NO.	Size A (mm)	Size B (mm)	Size C (mm)
T01 600mm	2FT(600mm)	84	63
T01 1200mm	4FT(1200mm)	84	63
T01 1500mm	5FT(1500mm)	84	63
T01 1800mm	6FT(1800mm)	84	63
T01 2400mm	8FT(2400mm)	84	63

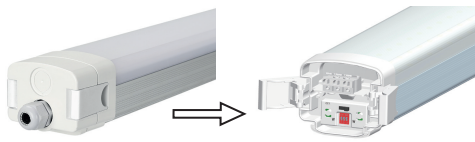
mm



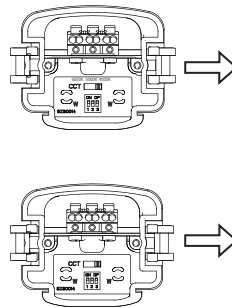
Ceiling Mounted **1**



Suspension **2**



Open the end cap, then Wattage /CCT Setting



· Wattage setting (Option)

1.2m led tri-proof light

Before use, always check dipswitch setting:

1	2	3	Power(W)
ON	ON	—	50
ON	—	—	45
—	ON	—	37
—	—	—	30

1.5m led tri-proof light

Before use, always check dipswitch setting:

1	2	3	Power(W)
ON	ON	ON	60
ON	ON	—	40
—	ON	—	30
—	—	—	20

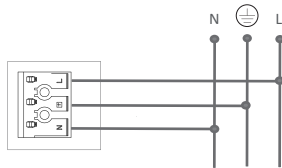
· CCT setting (Option)

Before use, always check CCT setting:

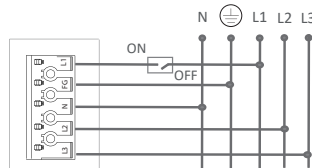
Option 1:	6000K	5000K	4000K
Option 2:	5000K	4000K	3000K
Option 3:	6000K	4500K	3000K

Wattage /CCT Setting **3**

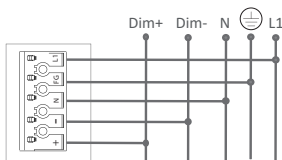
· Non-Dimmable



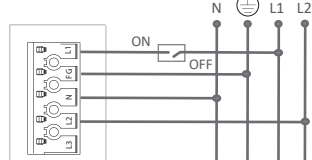
· Non-Dimmable



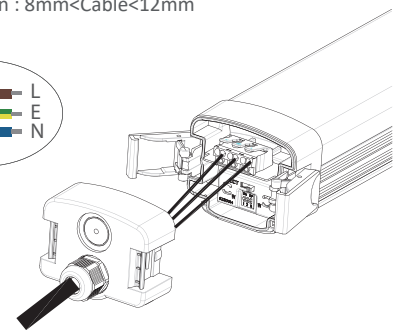
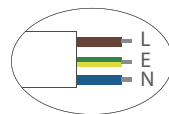
1-10V or Dali Dimming



Emergency



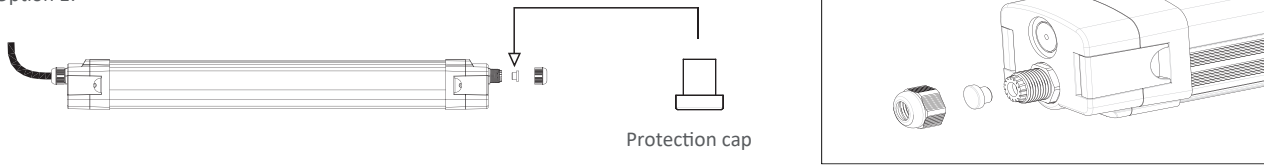
The min. diameter is $\geq 1.5\text{mm}^2$
Dimension : $8\text{mm} < \text{Cable} < 12\text{mm}$



Connecting Power Supply **4**

• **Single Wired**

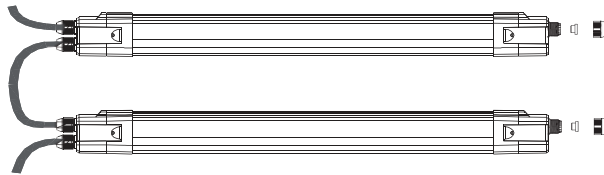
Option 1:



• **Linkable (Double Wired)**



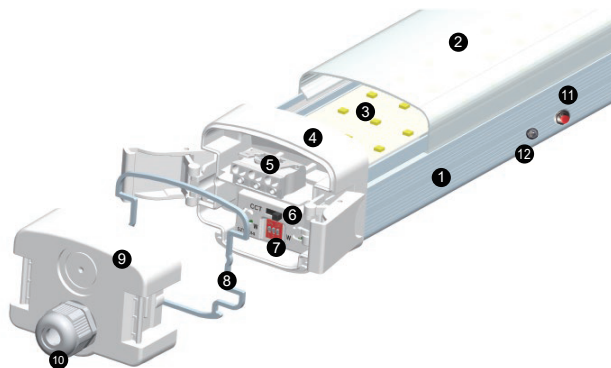
Option 2:



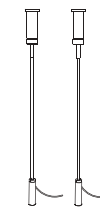
Max. Quantity in Line Connection

Luminaire Power	Input Voltage	16A@2.5MM ² Cable	9A@1.5MM ² Cable
20W	220-240Vac	114	66
30W	220-240Vac	76	44
32W	220-240Vac	71	41
37W	220-240Vac	61	35
40W	220-240Vac	57	33
42W	220-240Vac	54	32
45W	220-240Vac	50	29
50W	220-240Vac	46	26
60W	220-240Vac	38	22

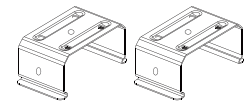
6 Explosion Drawing



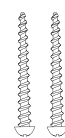
- 1 Aluminum Board
- 2 PC Cover
- 3 LED and PCB
- 4 Middle Cap
- 5 Terminal block
- 6 CCT Switch
- 7 Power Switch
- 8 Waterproofing Silica Gel
- 9 End Cap Cap
- 10 Cable Gland
- 11 Emergency Test Switch
- 12 Emergency Indicator Light



Steel cable



clips



M4x60mm



PA4x30mm



8x40mm



Protection cap



DK: Må kun installeres af autoriseret elinstallatør
 EN: Only to be installed by an authorized electrician.

HOPOO GONIOPHOTOMETERS SYSTEM TEST REPORT

UGR Table

Report number:

MANUFACTURER:										
Address:										
NAME:					TYPE:			WEIGHT:		
SPECIFICATION:					DIMENSION: 1510*85mm			SERIAL No.:		
ceiling/cavity	0.7	0.7	0.5	0.5	0.3	0.7	0.7	0.5	0.5	0.3
walls	0.5	0.3	0.5	0.3	0.3	0.5	0.3	0.5	0.3	0.3
working plane	0.2	0.2	0.2	0.2	0.2	0.2	0.2	0.2	0.2	0.2
Room dimensions	Viewed crosswise					Viewed endwise				
x = 2H y = 2H	23.8	25.3	24.1	25.6	25.9	24.7	26.1	25.0	26.5	26.8
3H	25.4	26.8	25.8	27.1	27.5	26.8	28.1	27.2	28.5	28.9
4H	26.1	27.4	26.5	27.8	28.1	27.8	29.1	28.2	29.5	29.9
6H	26.6	27.8	27.0	28.2	28.6	28.9	30.1	29.3	30.5	30.9
8H	26.8	28.0	27.2	28.4	28.8	29.5	30.7	29.9	31.1	31.5
12H	26.9	28.1	27.4	28.5	28.9	30.1	31.2	30.5	31.6	32.1
4H 2H	24.6	26.0	25.1	26.3	26.7	25.3	26.6	25.7	27.0	27.4
3H	26.5	27.7	27.0	28.1	28.5	27.7	28.8	28.1	29.2	29.6
4H	27.4	28.4	27.8	28.8	29.3	28.9	29.9	29.4	30.4	30.8
6H	28.0	29.0	28.5	29.4	29.9	30.2	31.1	30.6	31.6	32.1
8H	28.3	29.2	28.8	29.7	30.2	30.8	31.7	31.3	32.2	32.7
12H	28.5	29.4	29.1	29.8	30.4	31.6	32.4	32.1	32.9	33.4
8H 4H	28.0	28.9	28.5	29.3	29.9	29.3	30.1	29.8	30.6	31.1
6H	28.9	29.7	29.5	30.2	30.7	30.8	31.5	31.3	32.0	32.6
8H	29.4	30.1	30.0	30.6	31.2	31.6	32.3	32.2	32.8	33.4
12H	29.8	30.4	30.4	30.9	31.5	32.6	33.2	33.2	33.7	34.4
12H 4H	28.1	28.9	28.6	29.4	30.0	29.3	30.1	29.8	30.6	31.1
6H	29.2	29.9	29.8	30.4	31.0	30.9	31.6	31.5	32.1	32.7
8H	29.8	30.4	30.4	30.9	31.5	31.9	32.4	32.4	33.0	33.6
Variations with the observer position at spacings:										
S = 1.0H	+ 0.1 / - 0.2					+ 0.1 / - 0.1				
1.5H	+ 0.2 / - 0.4					+ 0.2 / - 0.3				
2.0H	+ 0.3 / - 0.5					+ 0.2 / - 0.4				

CIE Pub.117 Corrected 7758 lm Total Lamp Luminous Flux.(8log(F/F0) = 7.1)