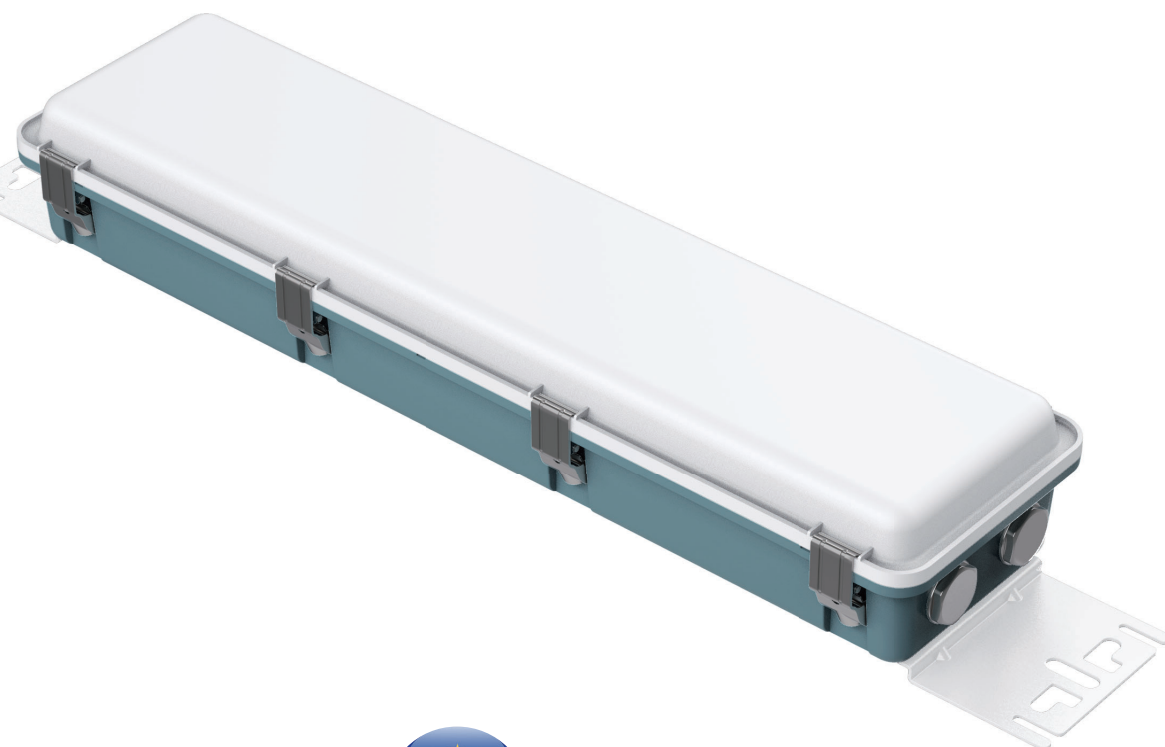


# SIRIUS GEN2 EU STD MARINE GRADE

**A**  
**LED**

**5**  
YEAR  
WARRANTY



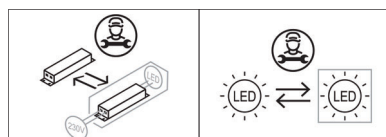
## Product data

### General Information

EAN13 code	5710010120609
Light source type	LED
Number of LED module	1 unit
Beam angle	105°
Color temperature	4000K neutral white
CRI	80
SDCM	3 steps
LED module replaceable	Yes, only by professionals
Number of LED driver	1 unit
Driver included	Yes
Driver replaceable	Yes, only by professionals
L90 lifetime of LED module	50,000 hrs
L80 lifetime of LED module	100,000 hrs
Lumen output	3600 lm

### Operating and Electrical

Input Voltage	100-277 Vac
Input frequency	50 / 60 Hz
System wattage	26 W
Power factor @ 230Vac	0.95
THD @ 230Vac	< 5%
Surge protection	6 kV (L/N-Ground)
Inrush current	35A pk Max, th =350µs
Ambient temperature range	-40°C to + 50°C
Performance ambient temperature Tq	+25°C



Installation method	Surface mounted
Optical type	Diffuser
Control and dimming	On/off
Connection type	5 pole terminal block, 5x6mm <sup>2</sup>
Protection class IEC	Safety class I
Glow-wire test	650°C, 30 s
Through-wiring function	Yes, 2.5mm <sup>2</sup>
PstLM	< 1
SVM	< 0.4
Environment classification	C5
Outdoor marine environment	Yes
Indoor marine environment	Yes
CE Mark	Yes
EU RoHS compliant	Yes
Net weight (piece)	4.2 Kg

### Dimension

Overall length	744 mm
Overall width	164.2 mm
Overall height	103 mm

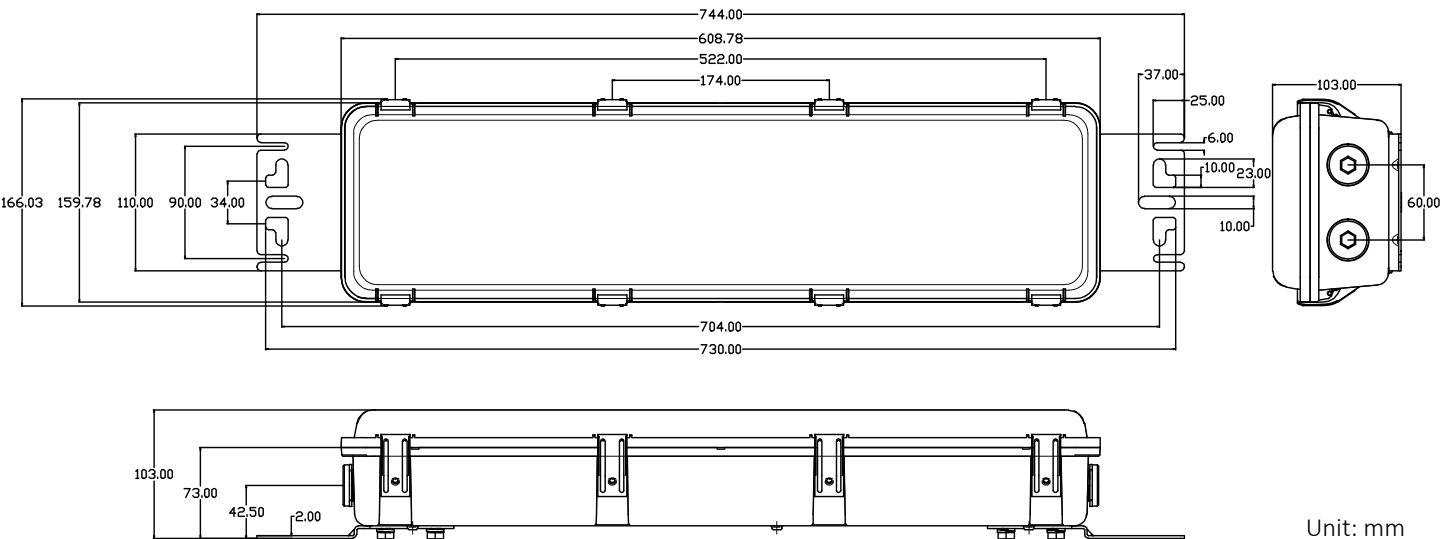
### Mechanical and Housing

Housing material	GRP
Optical material	Polycarbonate
Cable entry	2 x M25 sealing caps in each end
Sealing cap material	Nickel-plated brass
Material of installation bracket	316L stainless steel
Ingress protection code	IP 67
Mech. impact protection code	IK 10

### Remarks

LED Driver failure rate at 50,000hrs	5 %
Power consumption tolerance	± 7 %

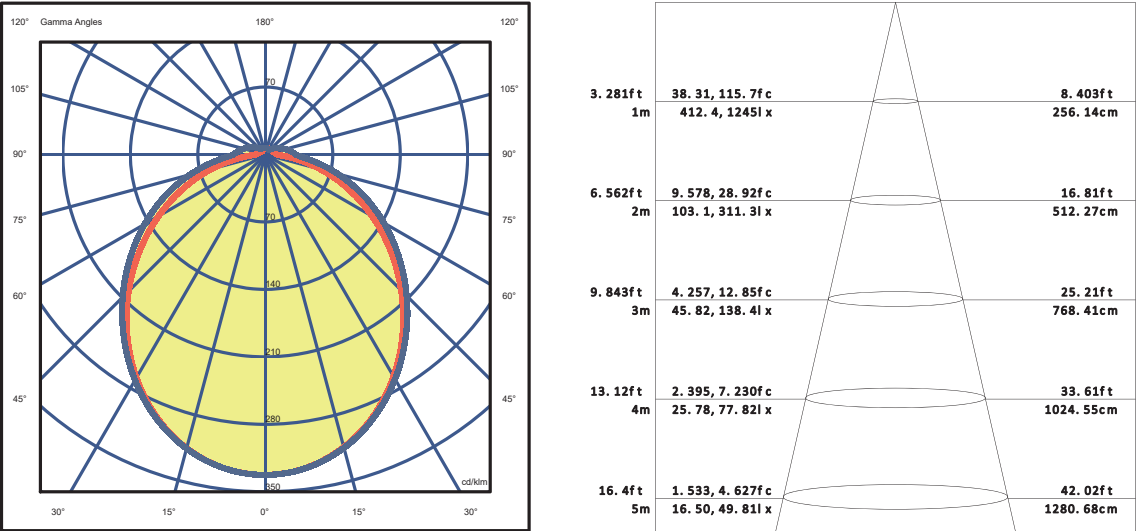
Dimension drawings



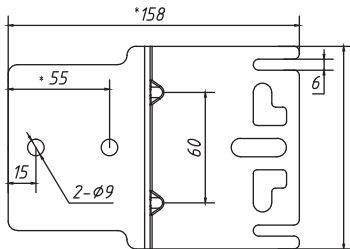
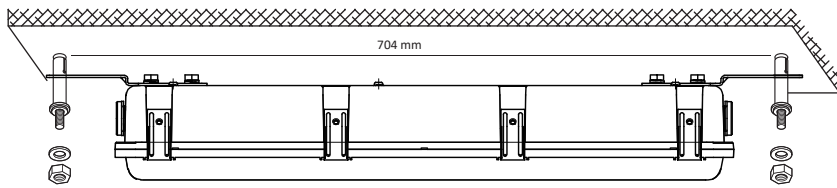
Max load on breaker

Type of electrical protection installation		Maximum number of luminaires to install
MCB16A	B TYPE	10
	C TYPE	19
Inrush Current (230VAC)		35A,350µs
Surge transient protection acc to. EN 61547 Clause 5.7		L/PE, N/PE 6KV L/N 4KV

Light distribution

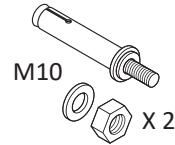


## Installation



unit: mm

- Drill two holds in desired area and fix the luminaire firmly with M8 anchor bolts.



Anchor bolts not included !

## Wiring

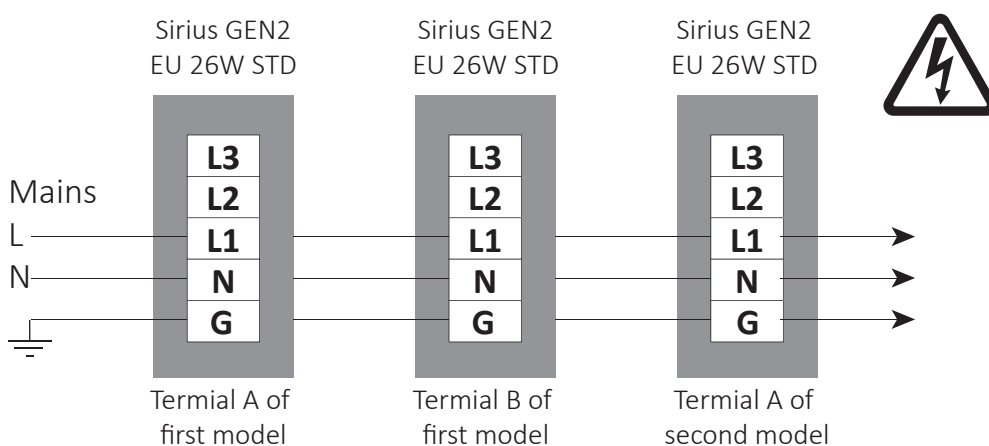
### Earthing the luminaire

The luminaire must be earthed in the terminal block.

Power supply must be from same line (fuse).

### Connection of luminaire to the mains

The product supports through wiring connection, that means it can be connected to other luminaires by connecting Terminal B of first model to Terminal A of the next unit as shown in the drawing.



It's very important that the luminaire is grounded. Failure to ground will create electrical shock hazards, which can cause serious injury and or death.

Technical information, advice and recommendations contained in these documents is based upon information that we believe to be reliable. All the information and advice contained in these documents is intended for use only by persons having been well trained and know-how to be used by such person only at their own risk and discretion. These instructions are informative only and does not cover all of the details, variations or combinations in which this product may be used, its storage, delivery, installation, check out, safe operation and maintenance. Since conditions of use of the product are outside of the care, custody and control of manufacturer, the purchaser should determine the suitability of the product for his intended use, and assumes all risk and liability whatsoever in connection therewith.