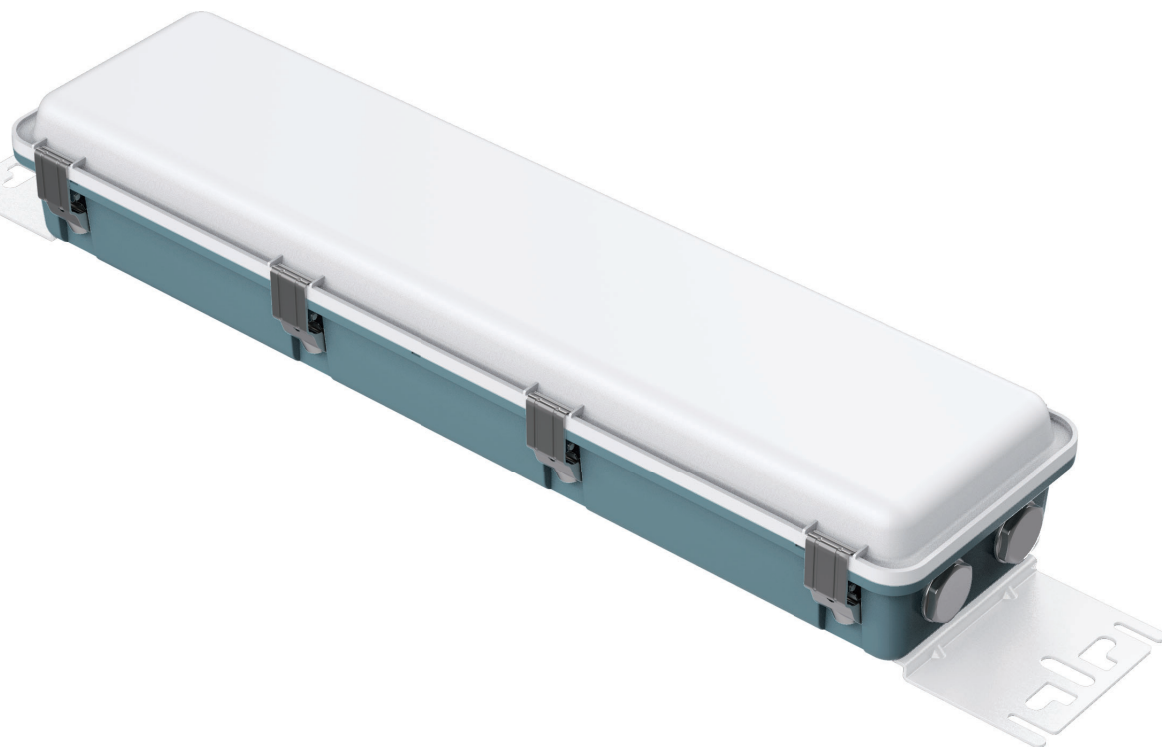


# SIRIUS GEN2 24VDC MARINE GRADE

**A**  
**LED**

**5**  
YEAR  
WARRANTY



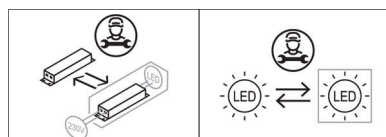
## Product data

### General Information

EAN13 code	5710010124607
Light source type	LED
Number of LED module	1 unit
Beam angle	105°
Color temperature	4000K neutral white
CRI	80
SDCM	3 steps
LED module replaceable	Yes, only by professionals
Number of LED driver	1 unit
Driver included	Yes
Driver replaceable	Yes, only by professionals
L90 lifetime of LED module	50,000 hrs
L80 lifetime of LED module	100,000 hrs
Lumen output	3600 lm

### Operating and Electrical

Rated voltage	24 VDC
Input voltage range	18...32 VDC
System wattage @ 24VDC	26 W
Input current @ 24VDC	1.1 A
Ambient temperature range	-40°C to + 50°C
Performance ambient temperature Tq	+25°C
Protection class IEC	Safety class III
Connection type	5 pole connectors, 0.5...4mm <sup>2</sup>
Through-wiring function	Yes, 2.5mm <sup>2</sup>



CE	RoHS	IP66	IP67	IK10	18V 32V	EN 61347	EN 55015
----	------	------	------	------	------------	-------------	-------------

### Control and dimming

On / off	Yes
PWM dimming	Yes
Analog dimming	Yes
PstLM	< 1
SVM	< 0.4
Environment classification	CX
Outdoor marine environment	Yes
Indoor marine environment	Yes
CE Mark	Yes
EU RoHS compliant	Yes
Installation method	Surface mounted
<b>Dimension</b>	
Overall length	744 mm
Overall width	166 mm
Overall height	103 mm

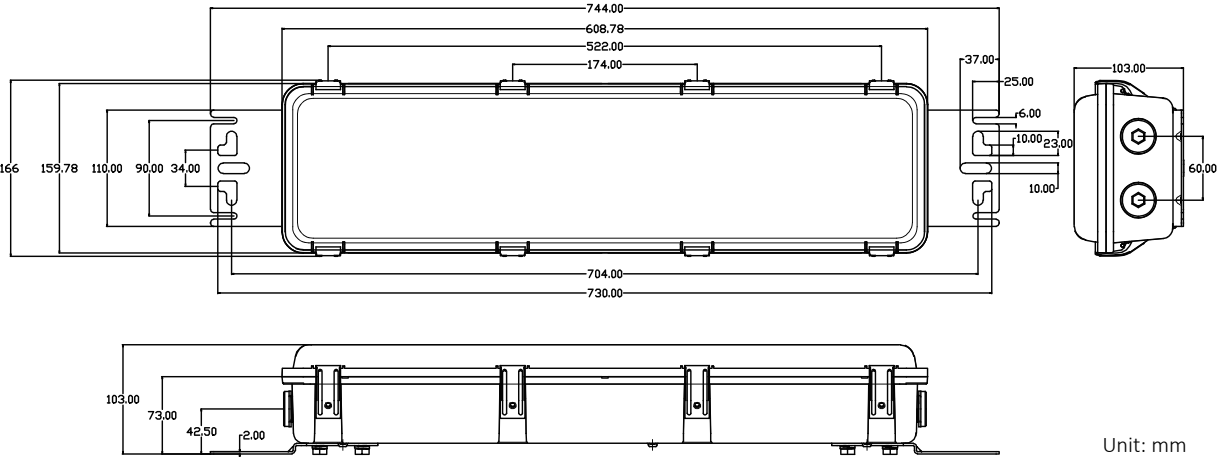
### Mechanical and Housing

Housing material	GRP
Optical material	Impact resistant PC
Cable entry	1 x M20 IP68 gland
Blind cap	3 unit
Material of installation bracket	316L stainless steel
Ingress protection code	IP 66/67
Mech. impact protection code	IK 10

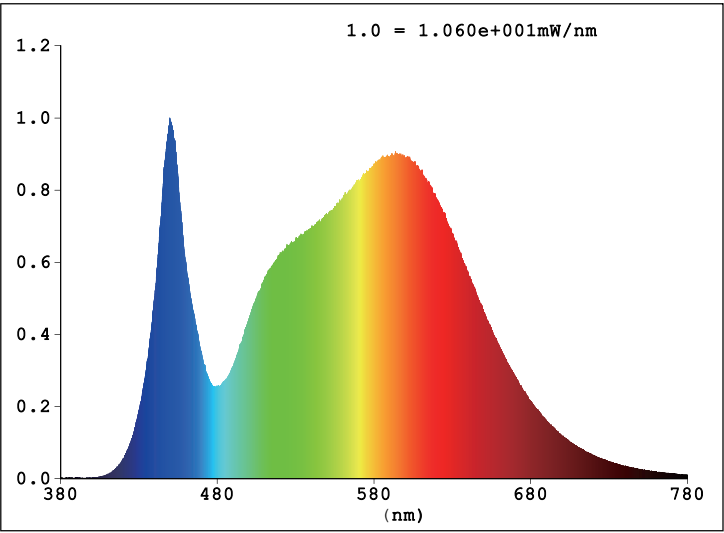
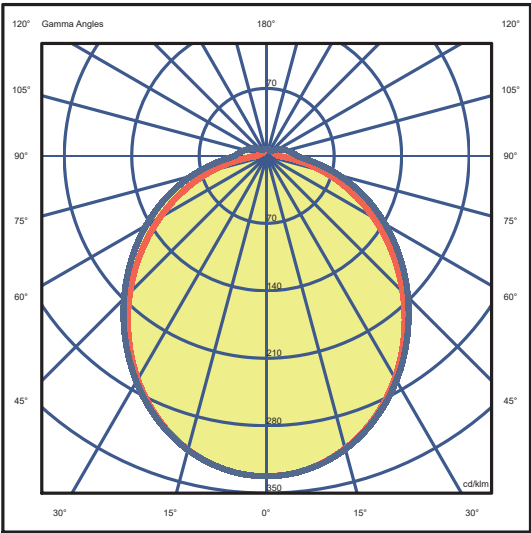
### Remarks

LED Driver failure rate at 50,000hrs	5 %
Power consumption tolerance	± 10 %
Light output tolerance	± 10 %

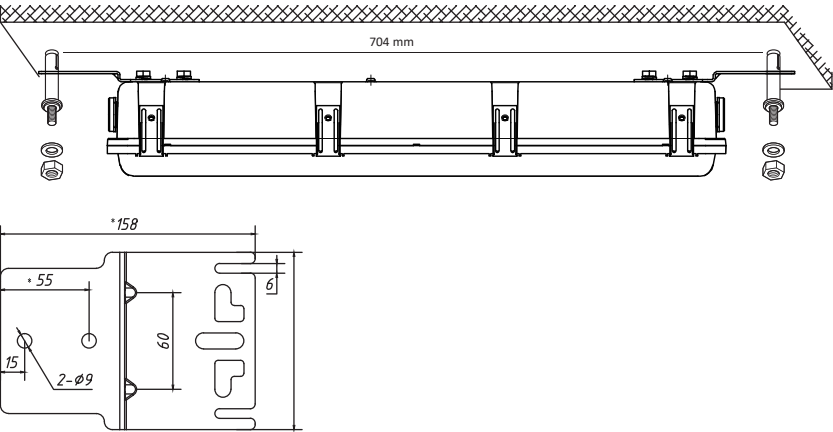
Dimension drawings



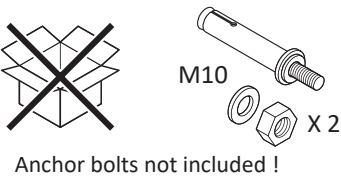
Light distribution



Installation



Drill two holes in desired area and fix the luminaire firmly with M8 anchor bolts.

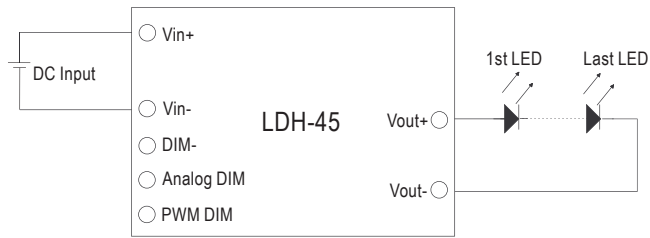


unit: mm

# Standard application

## ※ Operation without dimming:

IO operates at rated current without dimming function when the pins of analog DIM and PWM DIM keep open

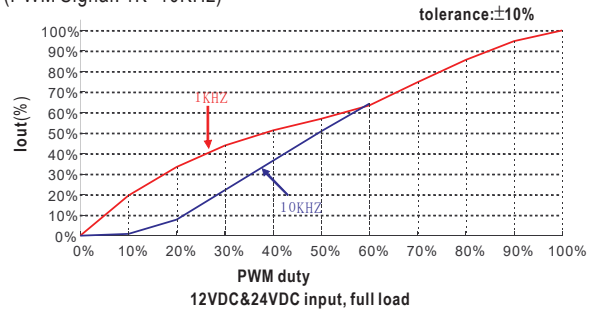


## ※ PWM Dimming Control (non DA type):

IO adjustment by PWM Signal



During PWM dimming operation, IO will change with the PWM duty (PWM Signal: 1K~10KHz)

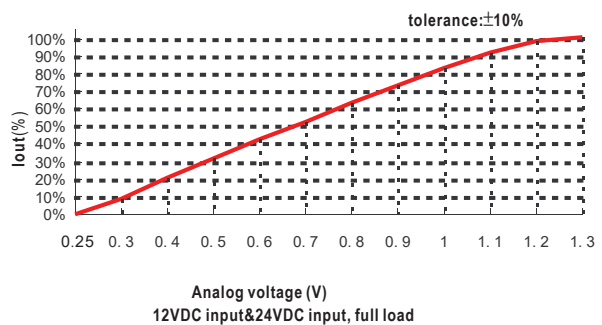


## ※ Analog Dimming Control (non DA type):

IO adjustment by DC voltage



During analog dimming operation, IO will change with DC input voltage



## Application Notes:

- 1.The positive and negative input terminals must be connected correctly and negative voltage can not be input to avoid damage to the power supply.
- 2.Due to the large input current, please pay attention to the voltage drop of the wiring, to ensure the power supply to work properly.
- 3.At dim off,LDH output voltage will drop to the same level as input voltage.To get luminaires complete dark, please make luminaires are light off when they are driving by the input voltage.